



HERITAGE, BEAUTY, SERVICE

Moda Product Profile

Carpet Details:

Specification	
Construction:	Woven Axminster
Texture:	Cut Pile Velour
Pitch:	7 per inch/ 27.6 per dcm
Rows:	8 per inch/31.4 per dcm
Pile Weight:	1225g/m2
Total Weight:	2070g/m2
Backing:	Woven Polyester/Polypropylene
Pile Yarn Content:	80% Wool / 20% Nylon
Pile Height:	7.5mm
Tuft Density per m2:	86,940
Yarn count & tex:	2 Ply/47's, R660 tex
Width:	4m

Tested for

Suitability

Heavy Domestic/General Commercial Class 23/32
BS EN 1307:2005

Flammability

Fire behaviour: CFL (In accordance clause 11
Smoke production : S1 of EN 13501-1-2002)
Low radius of char (BS4790 BS5287)

Castor Chair

Not recommended unless protecting mat is present.

Suitability for Stairs:

Yes (For maximum performance (in accordance with BS EN1307)
we recommend the use of an
approved stair nosing and the
movement of carpet every 6
months from tread to rise)

Installation

To be installed in accordance with BS5325 "Code of Practice for the Installation of Floor Coverings" and NICF manual.

For quantity orders requiring colour matching, please state at the time of ordering.

All samples may not be from the same production batch as current stock and therefore should be used as a guide and not as an exact match.

Colour variations: There may be colour variations/shade variations between each batch of carpet as well as with undyed materials.

Undyed Wool: Due to the inherent natural variations in undyed wool and the current blending techniques, there may be noticeable shade variations between the colours used in the same material and the actual production. Pattern match cannot be guaranteed with any tufted patterned carpet.

Features

Available in 4m broadloom only.
Regular Nationwide delivery service
Fashionable colours to meet a wide variety of
interior styles. Ease of maintenance.
Made in: EU

General Information

Pile reversal: All cut pile carpets can suffer from pile reversal and in certain instances this may become permanently bent or distorted for no specific reason that research has yet identified, giving areas of light and shade. This is also known as "shading" or "watermarking". It is not a defect in manufacture, it only occurs in a small percentage of all carpets and no liability whatsoever can be accepted by the manufacturer in respect of it.

Pile pressure: All cut pile carpets are liable to show light and dark patches resulting from disturbance of the pile created by foot traffic or brushing, This is a normal feature and is not a defect in manufacture and no liability whatsoever can be accepted by the manufacturer in respect of it.

Pale shades: We include within our collection a number of pale shades. Primarily these are used as top or highlight colours. These more delicate shades will invariably tend to soil more quickly and give a lower of light fastness than the norm, and may show natural blemishes within the fibre that tend to be masked in deeper shades containing a greater quantity of dyestuff.

Maintenance

Gaskell Mackay recommend that this carpet is maintained in accordance with an agreed maintenance schedule which should include the following:

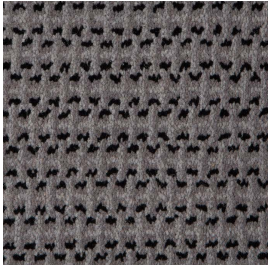
- i). Vacuum regularly.
- ii). Remove spills immediately.
- iii). Professionally clean as required.



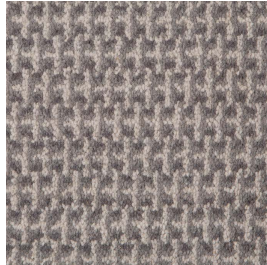
HERITAGE, BEAUTY, SERVICE

Moda Product Profile

Carpet Images



Bari Charcoal
Pattern Repeat:
W: 17.4cm x L: 15.2cm



Bari Shale
Pattern Repeat:
W: 17.4cm x L: 15.2cm



Brescia Black
Pattern Repeat:
W: 5.8cm x L: 5.7cm



Brescia Charcoal
Pattern Repeat:
W: 5.8cm x L: 5.7cm



Brescia Shale
Pattern Repeat:
W: 5.8cm x L: 5.7cm



Genoa Black
Pattern Repeat:
W: 8.7cm x L: 7.6cm



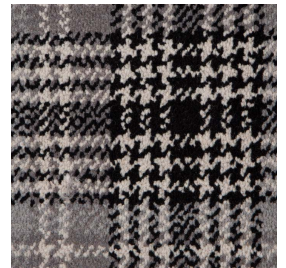
Genoa Shale
Pattern Repeat:
W: 8.7cm x L: 7.6cm



Lucca Black
Pattern Repeat:
W: 8.7cm x L: 8.9cm



Lucca Charcoal
Pattern Repeat:
W: 8.7cm x L: 8.9cm



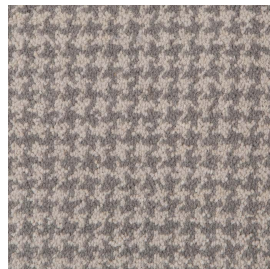
Milan Shale
Pattern Repeat:
W: 17.4cm x L: 17.1cm



Rimini Shale
Pattern Repeat:
W: 11.6cm x L: 11.4cm



Siena Black
Pattern Repeat:
W: 1.5cm x L: 1.3cm



Siena Shale
Pattern Repeat:
W: 1.5cm x L: 1.3cm



Sorrento Charcoal
Pattern Repeat:
W: 8.7cm x L: 8.3cm



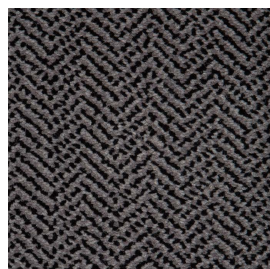
Verona Black
Pattern Repeat:
W: 8.7cm x L: 9.5cm



Verona Charcoal
Pattern Repeat:
W: 8.7cm x L: 9.5cm



Verona Shale
Pattern Repeat:
W: 8.7cm x L: 9.5cm



Vicenza Black
Pattern Repeat:
W: 17.4cm x L: 19.1cm



Vicenza Charcoal
Pattern Repeat:
W: 17.4cm x L: 19.1cm



Vicenza Shale
Pattern Repeat:
W: 17.4cm x L: 19.1cm



HERITAGE, BEAUTY, SERVICE

Moda Product Profile

Carpet Images



Verona Charcoal



Milan Shale