



Coulisse Screens have attained the US GreenGuard certification for indoor air quality.



Coulisse Screens have attained the US GreenGuard for Children & Schools certification, which makes them safe for the application in schools and health-care environments.



GreenGuard certified products are recognized as criteria for several green building programs, including the US LEEDS Green Building Council.



Coulisse Screens have been Deko-Test Standard 100 certified.



Coulisse Screens have excellent sound absorption properties.



Coulisse Screens have been infused with an anti-microbial protection coating that helps to prevent the growth of stains, odor-causing bacteria, mold and mildew.



Coulisse Screens are free of heavy metal elements and other hazardous substances.



Coulisse Screens have been tested to be 100% Phthalates free.



Coulisse Screens have been tested to be 100% Formaldehyde free.



Coulisse Screens have been tested and proven to emit ZERO VOC (Volatile Organic Compounds) when subjected to weather ability tests.



Coulisse Screens are recyclable



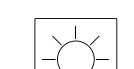
Coulisse Screens have attained German B1 flammability certifications.



Coulisse Screens have attained US NFPA 701 flammability certifications.



Coulisse Screens have attained French M1 flammability certifications.



Coulisse Screens comply with the most stringent standards in UV resistance.



Coulisse Screens have a color fastness rating of 8, indicating they optimally keep their color in heavy weather conditions.



Coulisse Screens are suitable for printing (digital printing, screen printing, transfer, paint, adhesive).



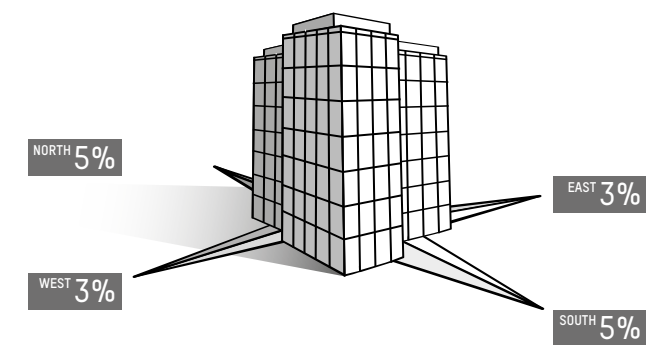
Coulisse Screens come with a 5 year limited warranty on fabric.

3000 SERIES

ONE LOOK, FOUR OPENNESS FACTORS

This unique screen collection offers possibilities to create a custom-made interior shading plan, meeting the different light, view and acoustic requirements in one building in the same uniform look and color. The collection offers 6 colors in the same basket weave, each available in an openness factor of 1, 3, 5 and 10 %. By specifying a mixture of openness factors the architect is able to devise an optimal and efficient plan, considering the global zone the building is located in, the multiple facade orientations at hand, clear or obstructed daylight entry, the function of the room and at the same time meeting the client's preferences regarding light, appearance and noise reduction. As a result, one can enjoy a perfect light and living climate anywhere in the building, while the identity of the building is being strengthened with uniformity throughout.

- Suitable for interior application
- Available in openness factors 1, 3, 5 and 10 %
- Available in 10 colors, 3 widths, in one basket weave
- Custom-made interior shading plan
- Uniform look throughout the building
- Excellent sound absorption performance
- Available with flammability certifications; M1, B1 and NFPA 701



coulisse

1%

OPENNESS FACTOR



250 CM / 98.4 IN

3001

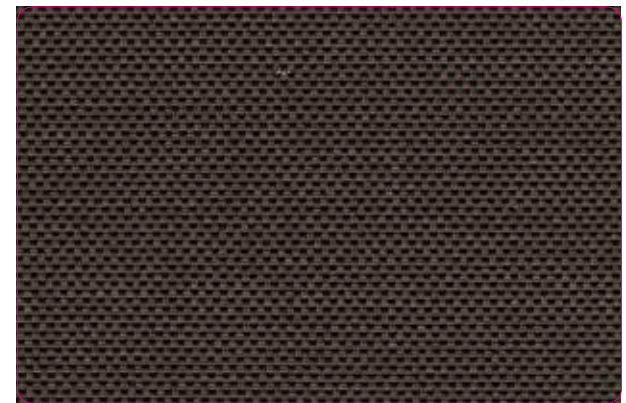


89-127 MM / 200-250-300 CM / 3.5-5-78.7-98.4-118.1 IN

3005

3%

OPENNESS FACTOR



200-250-300 CM / 78.7-98.4-118.1 IN

3003



250 CM / 98.4 IN

3010

5%

OPENNESS FACTOR

10%

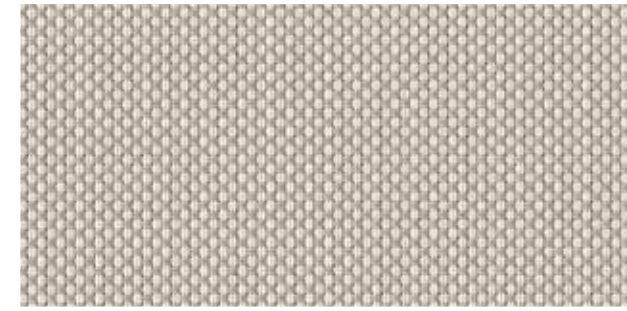
OPENNESS FACTOR



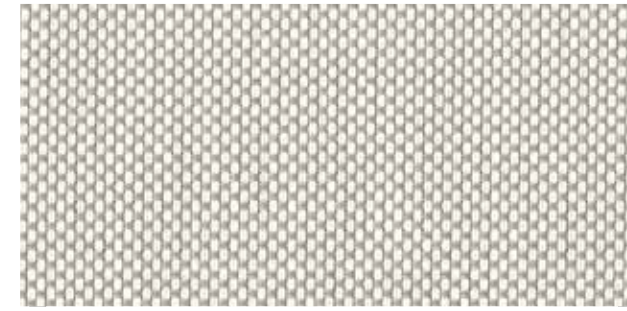
SCR-3005-01 CHALK
SCR-3005-01-250-M1 ✖



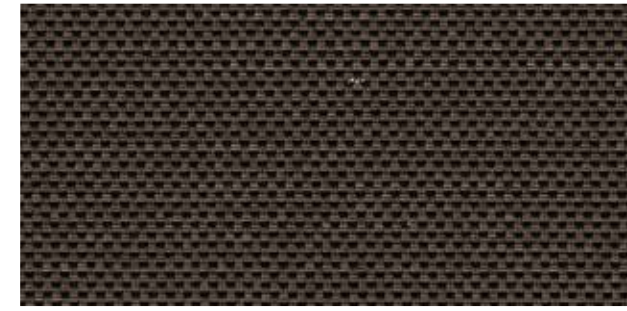
SCR-3005-02 CHALK BEIGE CREAM
SCR-3005-02-250-M1 ✖



SCR-3005-11 BEIGE PEARL GREY
SCR-3005-11-250-M1 ✖



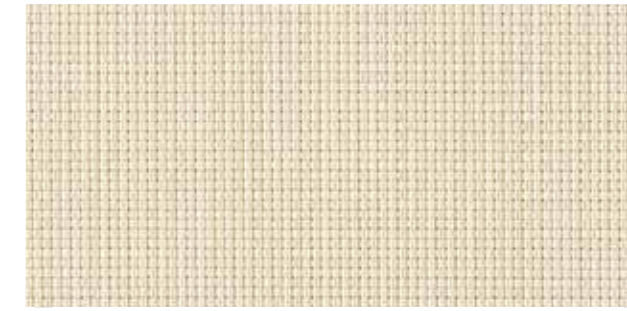
SCR-3005-03 CHALK SOFT GREY
SCR-3005-03-250-M1 ✖



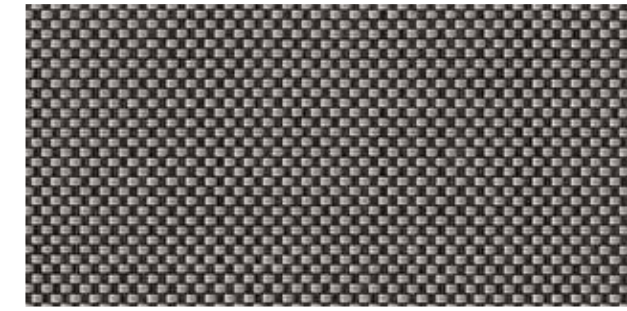
SCR-3005-10 CHARCOAL DARK BRONZE



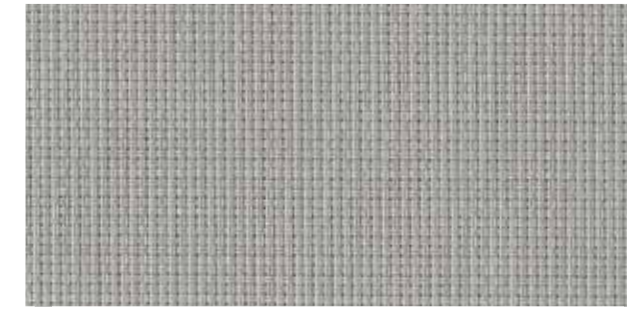
SCR-3005-00 IVORY



SCR-3005-09 GREY SAND



SCR-3005-05 CHARCOAL IRON GREY
SCR-3005-05-250-M1 ✖



SCR-3005-08 SOFT GREY
SCR-3005-08-250-M1 ✖



SCR-3005-06 EBONY

Also available with flammability certification M1 ✖
Due to the openness factors colors may appear to be different.

3001/3003 3005/3010

- 4 OPENNESS FACTORS IN THE SAME WEAVE & COLORS
- PVC / POLYESTER
- 2 X 2 BASKET WEAVE
- 10 COLORS
- INTERIOR APPLICATION
- HIGH SOUND ABSORPTION PROPERTIES



	1% OPENNESS SCR3001	3% OPENNESS SCR3003	5% OPENNESS SCR3005	10% OPENNESS SCR3010
Openness factor (%)	1	3	5	10
Weave	basketweave 2x2	basketweave 2x2	basketweave 2x2	basketweave 2x2
Composition	30 % PES, 70 % PVC	30 % PES, 70 % PVC	30 % PES, 70 % PVC	30 % PES, 70 % PVC
Fabric width	250 cm / 98.4 in	200-250-300 cm / 78.7-98.4-118.1 in	89-127 mm / 200-250-300 cm / 3.5-5-78.7-98.4-118.1 in	250 cm / 98.4 in
Roll length	27.4 m / 29.9 yds	27.4 m / 29.9 yds	27.4 m / 29.9 yds (vertical 90m / 98.4 yards)	27.4 m / 29.9 yds
Fabric weight	480 g/m ² (14.16 oz./yd ²)	470 g/m ² (13.86 oz./yd ²)	410 g/m ² (12.09 oz./yd ²)	340 g/m ² (10.03 oz./yd ²)
Fabric thickness	± 0.68 mm / ± 0.027 in	± 0.58 mm / ± 0.023 in	± 0.55 mm / ± 0.022 in	± 0.50 mm / ± 0.020 in
Breaking strength (ISO 14211)	warp 192 daN/5 cm, weft 198 daN/5 cm	warp 180 daN/5 cm, weft 178 daN/5 cm	warp 172 daN/5 cm, weft 175 daN/5 cm	warp 157 daN/5 cm, weft 135 daN/5 cm
Tearing strength (ISO 4674)	≥ 8 daN warp, ≥ 7 daN weft	≥ 8 daN warp, ≥ 7 daN weft	≥ 7 daN warp, ≥ 6 daN weft	≥ 7 daN warp, ≥ 6 daN weft
UV blockage	approximately 99 %	approximately 97 %	approximately 95 %	approximately 90 %
Color fastness (ISO 105: B02)	grade 8 (scale 1-8)	grade 8 (scale 1-8)	grade 8 (scale 1-8)	grade 8 (scale 1-8)
Fire classification	B1 DIN 4102, NFPA 701	B1 DIN 4102, NFPA 701	B1 DIN 4102, NFPA 701, M1 NFP 92503	B1 DIN 4102, NFPA 701
Bacterial & Fungi Resistance	BS EN ISO 846 (UK) / US ASTM G21 (Fungi) / US ASTM G22 (Bacteria)	BS EN ISO 846 (UK) / US ASTM G21 (Fungi) / US ASTM G22 (Bacteria)	BS EN ISO 846 (UK) / US ASTM G21 (Fungi) / US ASTM G22 (Bacteria)	BS EN ISO 846 (UK) / US ASTM G21 (Fungi) / US ASTM G22 (Bacteria)

Description	Solar Optical Properties					Shading Coefficient			*Solar Factor EN14501: glass type C			
	Ts	Rs	As	Tv	Tuv	1/8" CL	1/4" CL	1/4" H.A.	gtot ext.	class	gtot int.	class
SCR3001-00	4	67	29	3	1	0.29	0.30	0.30	0.08	4	0.33	2
SCR3001-01	8	77	15	6	1	0.21	0.22	0.26	0.07	4	0.31	2
SCR3001-02	10	62	28	4	1	0.35	0.35	0.32	0.07	4	0.35	2
SCR3001-03	1	41	58	0	1	0.47	0.46	0.38	0.07	4	0.39	2
SCR3001-05	0	8	92	0	1	0.70	0.66	0.49	0.09	3	0.52	0
SCR3001-06	0	3	97	0	1	0.73	0.69	0.51	0.09	3	0.55	0
SCR3001-08	0	32	68	0	1	0.53	0.51	0.41	0.08	4	0.46	1
SCR3001-09	4	51	45	2	1	0.41	0.40	0.35	0.08	4	0.38	2
SCR3001-10	0	12	88	1	1	0.67	0.64	0.48	0.09	3	0.54	0
SCR3001-11	1	51	48	1	1	0.40	0.40	0.35	0.08	4	0.49	1

Description	Solar Optical Properties					Shading Coefficient			*Solar Factor EN14501: glass type C			
	Ts	Rs	As	Tv	Tuv	1/8" CL	1/4" CL	1/4" H.A.	gtot ext.	class	gtot int.	class
SCR3003-00	9	72	19	8	4	0.35	0.32	0.30	0.09	4	0.34	2
SCR3003-01	10	74	16	9	4	0.26	0.27	0.28	0.08	4	0.32	2
SCR3003-02	7	58	35	7	4	0.37	0.37	0.33	0.08	4	0.36	2
SCR3003-03	5	43	52	7	4	0.47	0.46	0.38	0.08	4	0.40	1
SCR3003-05	3	10	87	4	3	0.66	0.49	0.60	0.10	3	0.53	0
SCR3003-06	3	3	94	5	3	0.74	0.70	0.51	0.10	3	0.56	0
SCR3003-08	9	51	40	6	4	0.42	0.36	0.38	0.09	4	0.47	1
SCR3003-09	6	37	57	7	4	0.51	0.50	0.40	0.09	4	0.39	2
SCR3003-10	3	5	92	3	3	0.69	0.50	0.62	0.10	3	0.55	0
SCR3003-11	6	39	55	5	4	0.48	0.40	0.44	0.09	4	0.50	0

Description	Solar Optical Properties					Shading Coefficient			*Solar Factor EN14501: glass type C			
	Ts	Rs	As	Tv	Tuv	1/8" CL	1/4" CL	1/4" H.A.	gtot ext.	class	gtot int.	class
SCR3005-00	10	70	20	10	6	0.29	0.30	0.30	0.11	3	0.35	1
SCR3005-01	12	74	14	11	7	0.26	0.27	0.29	0.10	3	0.33	2
SCR3005-02	9	56	35	9	6	0.39	0.38	0.34	0.11	3	0.36	1
SCR3005-03	6	47	47	8	6	0.44	0.43	0.37	0.10	3	0.41	1
SCR3005-05	7	11	82	8	5	0.66	0.49	0.41	0.12	3	0.54	0
SCR3005-06	5	3	92	7	5	0.74	0.70	0.51	0.12	3	0.56	0
SCR3005-08	14	49	37	12	6	0.44	0.37	0.41	0.11	3	0.48	1
SCR3005-09	8	40	52	9	5	0.52	0.50	0.40	0.11	3	0.40	1
SCR3005-10	7	5	88	8	5	0.70	0.51	0.44	0.12	3	0.55	0
SCR3005-11	8	40	52	9	6	0.50	0.48	0.40	0.11	3	0.55	0

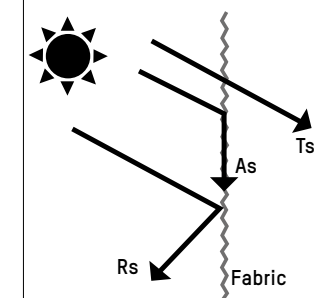
Description	Solar Optical Properties					Shading Coefficient			*Solar Factor EN14501: glass type C			
	Ts	Rs	As	Tv	Tuv	1/8" CL	1/4" CL	1/4" H.A.	gtot ext.	class	gtot int.	class
SCR3010-00	21	71	8	23	11	0.34	0.33	0.30	0.12	3	0.37	1
SCR3010-01	23	73	4	22	12	0.29	0.26	0.25	0.11	3	0.34	2
SCR3010-02	15	62	23	17	9	0.38	0.35	0.32	0.12	3	0.37	1
SCR3010-03	10	55	35	11	9	0.45	0.44	0.42	0.11	3	0.42	1
SCR3010-05	9	13	78	10	10	0.72	0.68	0.53	0.13	3	0.55	0
SCR3010-06	7	5	88	9	10	0.75	0.70	0.56	0.13	3	0.57	0
SCR3010-08	20	54	26	19	9	0.56	0.53	0.45	0.12	3	0.49	1
SCR3010-09	12	51	37	13	9	0.45	0.43	0.37	0.12	3	0.41	1
SCR3010-10	10	9	81	11	9	0.69	0.67	0.50	0.13	3	0.56	0
SCR3010-11	11	46	43	12	9	0.42	0.42	0.37	0.12	3	0.56	0

Performance evaluations conducted by Matrix, Inc., Mesa, Arizona.

Ts = Solar Transmittance
Rs = Solar Reflectance
As = Solar Absorptance
Tv = Visual Transmittance
Tuv = UV Transmittance

1/8 CL = 1/8" Clear Glass
1/4 CL = 1/4" Clear Glass
1/4 HA = 1/4" Heat Absorbing Glass

The solar optical properties are used to calculate the shading coefficient. The shading coefficient represents the percentage of solar heat gain that is transmitted to the interior through the glass and shading system. Darker colors provide maximum glare reduction and visibility.



Ts+Rs+As = 100% of solar energy

*Measurements according to EN410; Classification according to EN 14501: Blinds and Shutters - Thermal and visual comfort

gtot ext = Solar factor + Solar shading exterior application
gtot int = Solar factor + Solar shading interior application
Class = Classification from 0 to 4 where 0 is very little effect and 4 is very good effect

- Roller Shades
- Panel Tracks
- Vertical Blinds
- Roman Shades
- INTERIOR

SCREEN ESSENTIAL

3001/3003/3005/3010

1%
OPENNESS
FACTOR

3%
OPENNESS
FACTOR

5%
OPENNESS
FACTOR
M1

10%
OPENNESS
FACTOR



Coulisse B.V. Vonderweg 48 7468 DC Enter The Netherlands
T +31 547 85 55 55 F +31 547 85 55 50 E info@coulisse.com

Coulisse Inc. 501 Brickell Key Drive
STE 507 Miami, FL 33131 United States of America

www.coulisse.com

SK-1088-104-2014

All values are only average values and are subject to changes within acceptable tolerances. Technical data are subject to modification.

coulisse