



HERITAGE, BEAUTY, SERVICE

## Tartan Product Profile

### Carpet Details:

Specification	
Construction:	Woven Axminster
Texture:	Cut Pile Velour
Pitch:	7 per inch/27.6 per dcm
Rows:	8 per inch/31.4 per dcm
Pile Weight:	*1260g/m2 - 1310g/m2
Total Weight:	*2070g/m2 - 2500g/m2
Tuft Density per m2:	86,940
Backing:	Woven Polyester/Polypropylene or Woven Jute/Cotton
Pile Yarn Content:	80% Wool, 20% Nylon
Pile Height:	7.5mm (Total height: 10.5mm)
Yarn count & tex	2 Ply/47's, R660 tex or 2/42's, R740 tex
Width:	4m

\* Design Dependent

### Tested for

#### Suitability

Extra Heavy Domestic/Heavy Contract

#### Flammability

Fire behaviour : CFL (in accordance with clause 11 of EN 13501-1:2002)  
 Smoke production : S1  
 Low radius of char (BS4790 BS5287)

#### Castor Chair

Not recommended unless protecting mat is present.

#### Suitability for Stairs:

Yes (For maximum performance (in accordance with BS EN1307) we recommend the use of an approved stair nosing and the movement of carpet every 6 months from tread to rise)

### Installation

To be installed in accordance with BS5323 "Code of Practice for the Installation of Floor Coverings" and NICF manual.

For quantity orders requiring colour matching, please state at the time of ordering.

All samples may not be from the same production batch as current stock and therefore should be used as a guide and not as an exact match.

Colour variations: There may be colour variations/shade variations between each batch of carpet as well as with undyed materials.

Undyed Wool: Due to the inherent natural variations in undyed wool and the current blending techniques, there may be noticeable shade variations between the colours used in the same material and the actual production. Pattern match cannot be guaranteed with any tufted patterned carpet.

### General Information

**Pile reversal:** All cut pile carpets can suffer from pile reversal and in certain instances this may become permanently bent or distorted for no specific reason that research has yet identified, giving areas of light and shade. This is also known as "shading" or "watermarking". It is not a defect in manufacture, it only occurs in a small percentage of all carpets and no liability whatsoever can be accepted by the manufacturer in respect of it.

**Pile pressure:** All cut pile carpets are liable to show light and dark patches resulting from disturbance of the pile created by foot traffic or brushing, This is a normal feature and is not a defect in manufacture and no liability whatsoever can be accepted by the manufacturer in respect of it.

**Pale shades:** We include within our collection a number of pale shades. Primarily these are used as top or highlight colours. These more delicate shades will invariably tend to soil more quickly and give a lower of light fastness than the norm, and may show natural blemishes within the fibre that tend to be masked in deeper shades containing a greater quantity of dyestuff.

### Maintenance

Gaskell Mackay recommend that this carpet is maintained in accordance with an agreed maintenance schedule which should include the following:

- i). Vacuum regularly.
- ii). Remove spills immediately.
- iii). Professionally clean as required.

### Features

Available in 4m broadloom only. Regular Nationwide delivery service  
 Fashionable colours to meet a wide variety of interior styles. Ease of maintenance. Made in: EU. Available from stock.



HERITAGE, BEAUTY, SERVICE

# Tartan Product Profile

## Carpet Images



Autumn Plaid  
Pattern Repeat:  
W: 50cm x L: 48.3cm



Ben Alder  
Pattern Repeat:  
W: 50cm x L: 50cm



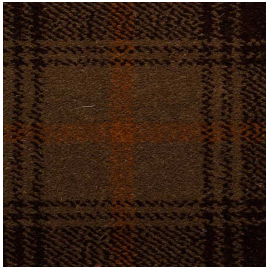
Ben Avon  
Pattern Repeat:  
W: 33cm x L: 33cm



Ben Cruachan  
Pattern Repeat:  
W: 50cm x L: 50cm



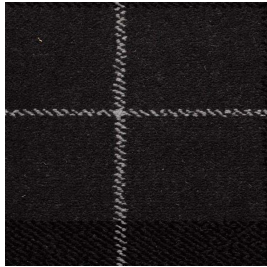
Ben Hope  
Pattern Repeat:  
W: 50cm x L: 50cm



Ben Kilbrec  
Pattern Repeat:  
W: 50cm x L: 50cm



Ben Lomond  
Pattern Repeat:  
W: 33cm x L: 33cm



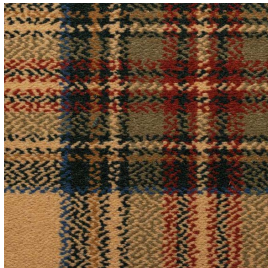
Ben Macdui  
Pattern Repeat:  
W: 50cm x L: 50cm



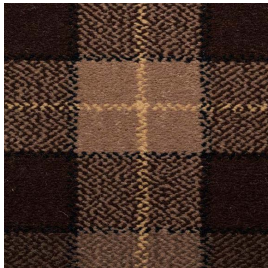
Ben Nevis  
Pattern Repeat:  
W: 33cm x L: 33cm



Black Watch  
Pattern Repeat:  
W: 33.4cm x L: 33cm



Dress Stewart  
Pattern Repeat:  
W: 33.4cm x L: 33.7cm



Tartan Earth  
Pattern Repeat:  
W: 50cm x L: 48.3cm



Gordon Regimental  
Pattern Repeat:  
W: 50cm x L: 33.7cm



Tartan Heather  
Pattern Repeat:  
W: 33.4cm x L: 33.7cm



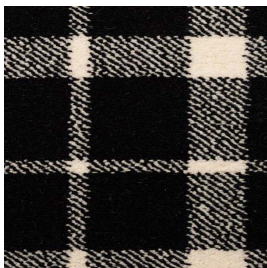
Heathland Tartan  
Pattern Repeat:  
W: 50cm x L: 48.3cm



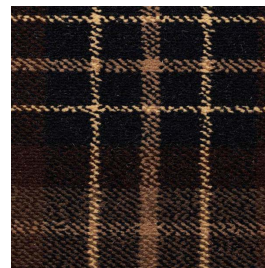
Tartan Lindsay  
Pattern Repeat:  
W: 33.4cm x L: 33.7cm



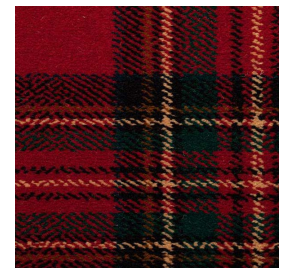
Macdonald Tartan  
Pattern Repeat:  
W: 50cm x L: 48.9cm



Menzies Tartan  
Pattern Repeat:  
W: 33.4cm x L: 33.7cm



Tartan Midnight  
Pattern Repeat:  
W: 33.4cm x L: 33.7cm



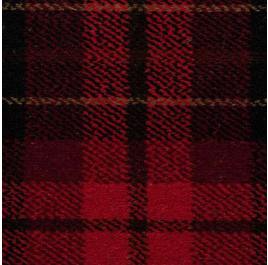
Royal Stewart  
Pattern Repeat:  
W: 33.4cm x L: 33.7cm



HERITAGE, BEAUTY, SERVICE

# Tartan Product Profile

## Carpet Images



Royale Tartan  
Pattern Repeat:  
W: 33.4cm x L: 33.7cm



Rustic Plaid  
Pattern Repeat:  
W: 50cm x L: 48.3cm



Shaker Tartan  
Pattern Repeat:  
W: 33.4cm x L: 33cm



Weathered Buchanan  
Pattern Repeat:  
W: 33.4cm x L: 33cm



Weathered Buchanan