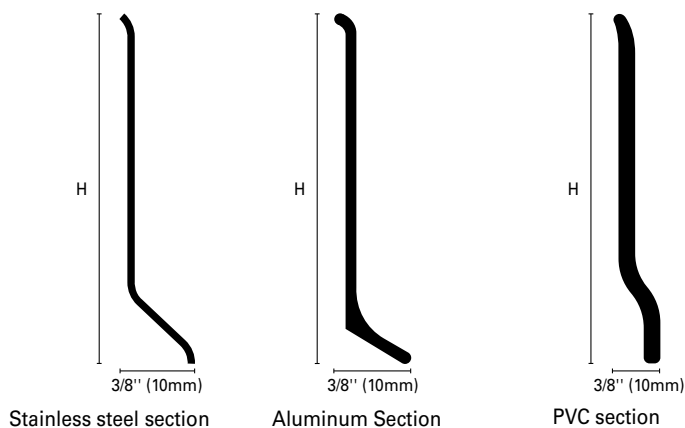


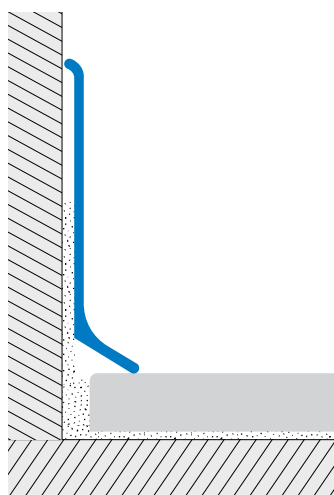


BASEBOARD BA metal and PVC profiles can be easily installed with adhesive, screws or nails: a simple, elegant and durable solution.

skirting BA



The slightly rounded edges seal the baseboard onto the floor covering. The protruding lip on the bottom of the profile conceals the perimeter movement joint.



SKIRTING BA-AS* Silver Anodized Aluminum

This extruded profile has a silver coating over its visible surface which offers adequate resistance to corrosion and good resistance to oxidation and mechanical impact. Available in two versions: without adhesive (ASN) and self-adhesive (ASA) for fast and easy installation. Endcap, internal, external joint pieces in silver synthetic resin are available for BA600 and BA800. (RAL colors are available upon request for a minimum quantity.)

SKIRTING BA 600 A* Powder-Coated Aluminum in Corten Brown, Sandblasted Gray, Matte White

This aluminum profile is color-coated with a polyester powder coat.

SKIRTING BA 600 A *Textured Extruded Aluminum

Innovative and elegant, wood-colored finishes are available in bleached oak (ATRS), wenge (ATWE), teak (ATTK), and oak (ATRO). Available without adhesive (A*N).

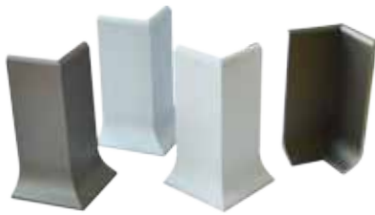
	H = in	mm	Art.		
Material:	1-25/32	45	BA	450	ASN/ASA
Extruded Anodized Aluminum	2-3/8	60	BA	600	ASN/ASA/AT
Finish: Silver (AS), Titanium (AT)	3-1/8	80	BA	800	ASN/ASA
	4	100	BA	1000	ASN/ASA
Length: 8'10" (2.70meters)					
Height: 1-25/32", 2-3/8", 3-1/8", 4" (45, 60, 80, 100mm)					
Material:	2-3/8	60	BA	600	A60/A50/AM11
Powder Coated Aluminum					
Finish: Corten (A60), Micaceous Grey (A50), Matt White (AM11)					
Length: 8'10" (2.70meters)					
Height: 2-3/8" (60mm)					
Material:	2-3/8	60	BA	600	ATRSN/ATWEN
Extruded Aluminum					ATTKN/ATRON
Finish: Whitened oak (ATRS), Wengé (ATWE), Teak (ATTK), Oak (ATRO)					
Length: 8'10" (2.70meters)					
Height: 2-3/8" (60mm)					



INTERNAL AND EXTERNAL CORNERS FOR BASEBOARD BA

Internal and external corners, in Silver anodized Aluminum (AS), Titanium anodized Aluminum (AT), Matt white powder-coated Aluminum (AM11), to make proper and neat junctions.

Available in 1-25/32", 2-3/8", 3-1/8", 4" (45, 60, 80, 100mm) height.

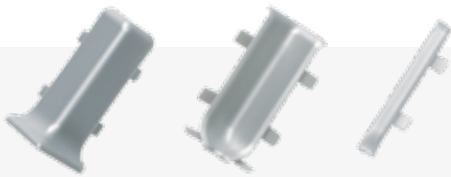


	H = in	mm	Art.		
Material: Aluminum	1-25/32	45	BAI/BAE	450	AS
	2-3/8	60	BAI/BAE	600	AS/AT/AM11
	3-1/8	80	BAI/BAE	800	AS
	4	100	BAI/BAE	1000	AS
Finish: Silver anodized (AS), Titanium anodized (AT), Matt White powder-coated (AM11)					
Height: 1-25/32", 2-3/8", 3-1/8", 4" (45, 60, 80, 100mm)					

BASEBOARD ENDCAPS AND JOINT PIECES

Endcap, internal / external corner joint pieces in silver synthetic resin complete the installation.

H = 2-3/8" and 3-1/8" (60 and 80mm).



	Description	Art.		
Material: Polypropylene	Internal corner	BAI	600/800	PS
	External corner	BAE	600/800	PS
	End cap	BAT	600/800	PS
Finish: Silver (PS)				
Height: 2-3/8", 3-1/8" (60, 80mm)				

SKIRTING BA-I* Stainless Steel AISI 304 - DIN 1.4301

This minimal, modern stainless steel profile ensures high resistance to most diluted chemicals; ideally suited for food processing plants and hospitals. Available with or without adhesive in polished (IL), brushed (IS) and sanded (IX) stainless steel. Endcap (BAT-PI), internal (BAI-PI) / external (BAE-PI) corner joint pieces available in steel-colored synthetic resin.

	H = in	mm	Art.		
Material: Stainless Steel AISI 304	2-3/8	60	BA	600	ILN/ILA/ISN/ISA/IX
	3-1/8	80	BA	800	ILN/ILA/ISN/ISA
Finish: Polished (IL), Brushed (IS), Sanded (IX)					
Length: 8' 10" (2.70meters)					

SKIRTING BA 700 P* Expanded PVC

This profile in rigid, expanded PVC is available in four semimatte color finishes. Easy to cut, it can be installed with adhesive, screws or nails. The baseboard has excellent anti-static properties and is ideal for hospitals and recreation facilities. The protruding lip on the bottom of the profile slightly differs from the aluminum and stainless steel versions.

	H = in	mm	Art.		
Material: Expanded PVC	2-3/4	70	BA	700	P12/P22/P51/P79
	Finish: White (P12), Grey (P22), Black (P51), Walnut (P79)				
Length: 6' 7" (2,00meters)					