



SHEERWEAVE[®]
BY PHIFER

STYLE
4600 / 4500

WEAVING
EXCELLENCE
WITH
INNOVATION



| Code | Color | SOLAR OPTICAL PROPERTIES | | | | SHGC/G VALUE g-tot (glass & blind) | |
|------------------------|-------------|--------------------------|----|----|----|---------------------------------------|--------------------|
| | | TS | RS | AS | TV | SINGLE 1/4 CL | INSULATING 1 HA |
| STYLE 4600 - 3% | | | | | | | |
| P06 | Chalk | 10 | 74 | 16 | 9 | 0.23 | 0.19 |
| P10 | Granite | 5 | 43 | 52 | 7 | 0.40 | 0.27 |
| Q59 | Ecru | 7 | 58 | 35 | 8 | 0.32 | 0.23 |
| Q60 | Golden Sand | 6 | 37 | 57 | 7 | 0.44 | 0.29 |
| U32 | Linen | 8 | 64 | 28 | 8 | 0.29 | 0.22 |
| V07 | Pewter | 5 | 31 | 64 | 7 | 0.46 | 0.30 |
| V10 | Ebony | 3 | 3 | 94 | 5 | 0.61 | 0.37 |
| V44 | Sandstone | 5 | 39 | 56 | 6 | 0.42 | 0.29 |
| V95 | Cappuccino | 4 | 20 | 76 | 6 | 0.52 | 0.33 |
| V96 | Dark Bronze | 4 | 5 | 91 | 7 | 0.60 | 0.37 |
| STYLE 4500 - 5% | | | | | | | |
| P06 | Chalk | 12 | 74 | 14 | 11 | 0.23 | 0.19 |
| P10 | Granite | 6 | 47 | 47 | 8 | 0.37 | 0.26 |
| Q59 | Ecru | 9 | 56 | 35 | 9 | 0.33 | 0.24 |
| Q60 | Golden Sand | 7 | 37 | 56 | 8 | 0.44 | 0.29 |
| U32 | Linen | 11 | 63 | 26 | 12 | 0.30 | 0.23 |
| V07 | Pewter | 6 | 30 | 64 | 9 | 0.47 | 0.30 |
| V10 | Ebony | 5 | 3 | 92 | 7 | 0.61 | 0.37 |
| V44 | Sandstone | 8 | 40 | 52 | 9 | 0.42 | 0.29 |
| V95 | Cappuccino | 6 | 18 | 76 | 9 | 0.53 | 0.34 |
| V96 | Dark Bronze | 7 | 5 | 88 | 10 | 0.61 | 0.37 |

PROTECTION THAT LIVES ON
MICROBAN[®]
 Microban[®] antimicrobial protection inhibits the growth of stain-causing bacteria, mold and mildew on the shade.



PRODUCT CERTIFIED FOR
 LOW CHEMICAL EMISSIONS
 UL.COM/GG
 UL 2818



TS = Solar Transmittance
 RS = Solar Reflectance
 AS = Solar Absorptance
 TV = Visual Transmittance

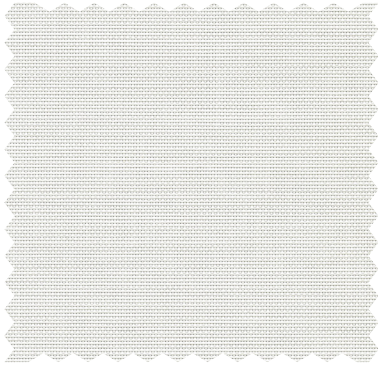
SHGC = Solar Heat Gain Coefficient

1/4 CL = 1/4" Clear Glass
 1 HA = 1" Heat Absorbing Glass

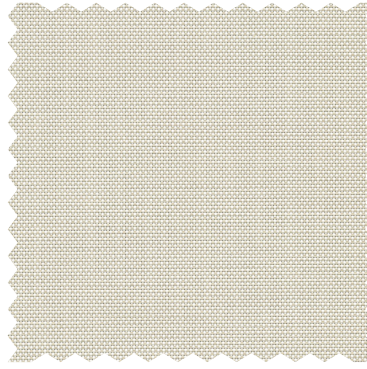
Fabrics Installed Internally
 Zero-Degree Profile Angle

For additional performance values,
 test references and technical
 definitions visit us at phifer.com.

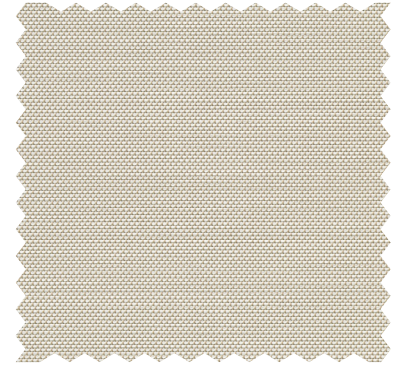
P06 Chalk



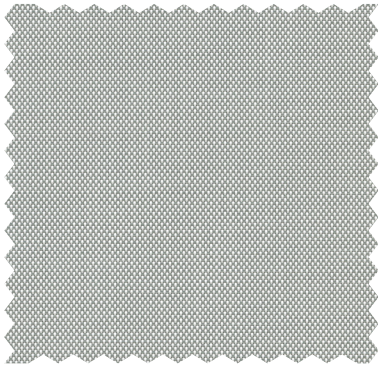
U32 Linen



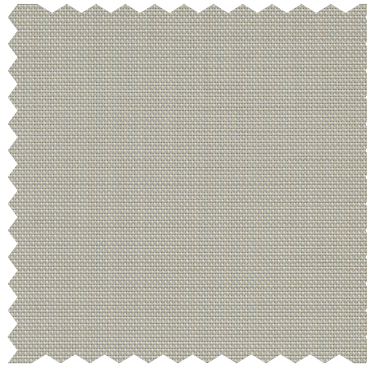
Q59 Ecrú



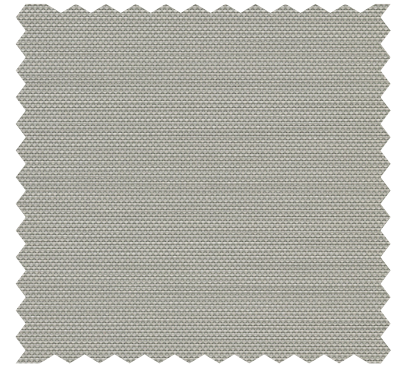
P10 Granite



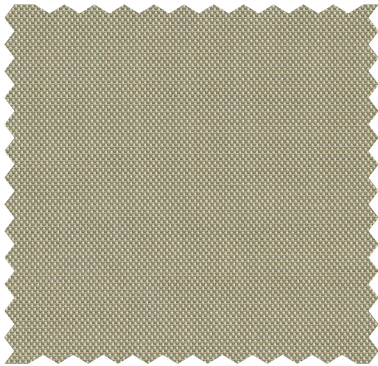
V44 Sandstone



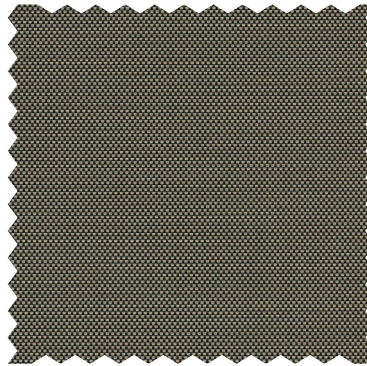
V07 Pewter



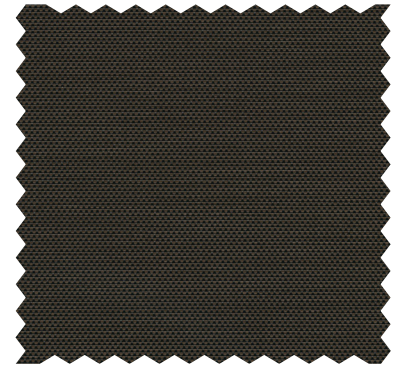
Q60 Golden Sand



V95 Cappuccino



V96 Dark Bronze



V10 Ebony



STYLE 4600 / 4500 SPECIFICATIONS

Using advances in polyester yarn development, Styles 4600 and 4500 are thinner, lighter weight vinyl coated polyester fabrics offered in 10 decorator colors. Woven in a 2x2 basketweave, these fabrics are ideal for applications where a more opaque and non-directional fabric is needed. Style 4600/4500 can also be used in exterior shading systems.

| | | |
|----------------------------|--|---------------------------------------|
| FIRE CLASSIFICATION | California U.S. Title 19 (small scale) | BS 5867 Part 2 Type B Performance |
| | NFPA 701 TM#1 (small scale) | CAN/ULC-S 109 (large and small scale) |
| | NFPA 701 TM#2 (large scale) | IBC Section 803.1.1 (Class A Rating) |
| | NFPA 101 (Class A Rating) | |

Fire classifications are subject to change. Please go to phifer.com for the most current information.

| | | | | | |
|---------------------------------------|---|-----------------|----------------|---|----------|
| BACTERIA AND FUNGAL RESISTANCE | ASTM E 2180 | ASTM G21 | AATCC30 Part 3 | ASTM D 3273 | ASTM G22 |
| | GREENGUARD Mold and Bacteria Standard ASTM 6329 | | | | |
| ENVIRONMENTAL CERTIFICATION | Includes Microban antimicrobial additives | | | | |
| | GREENGUARD | GREENGUARD Gold | | | |
| SAFE USE | Certified to these standards for low chemical emissions into indoor air during product usage | | | | |
| | RoHS Compliant | REACH Compliant | | US Consumer Product Safety Commission Section 101 | |
| WARRANTY | ANSI/WCMA A 100.1-2007 for lead content | | | | |
| | 10-year interior | 5-year exterior | | | |
| ACOUSTICAL PERFORMANCE | NRC (Noise Reduction Coefficient) and SAA (Sound Absorption Average) tested in accordance with | | | | |
| | ASTM C423-09a | | | | |
| UV PROTECTION | SheerWeave sun control fabrics are an effective way to reduce harmful UV rays. Phifer Incorporated is a proud member of the Skin Cancer Foundation's Corporate Council. | | | | |

| STYLE | 4600 | 4500 |
|-------------------------|--|--|
| WIDTHS | 63", 98" and 126" 160 cm, 248.9 cm and 320 cm | 63", 98" and 126" 160 cm, 248.9 cm and 320 cm |
| ROLL LENGTH | 30 Linear Yards 27.4 Linear Meters | 30 Linear Yards 27.4 Linear Meters |
| COMPOSITION | 22% Polyester 78% Vinyl on Polyester | 17% Polyester 83% Vinyl on Polyester |
| MESH WEIGHT | 17.4 oz/yd ² 589.97 g/m ² | 14.4 oz/yd ² 488.25 g/m ² |
| FABRIC THICKNESS | 0.030 in 0.76 mm | 0.024 in 0.61 mm |
| OPENNESS FACTOR | Approximately 3% | Approximately 5% |
| UV BLOCKAGE | Approximately 97% | Approximately 95% |
| ACOUSTICAL VALUE | NRC .20 / SAA .23 | NRC .15 / SAA .17 |

PHIFER
INCORPORATED

P. O. Box 1700 • Tuscaloosa, Alabama 35403-1700 USA
Phone: 205.345.2120 • FAX: 205.391.0799
Toll Free USA/Canada: 1.800.221.5497
phifer.com • ISO Registered



© SheerWeave is a registered trademark of PHIFER INCORPORATED.
© MICROBAN is a registered trademark of Microban Products Company.
TM UL, the UL logos and the UL mark are trademarks of UL LLC.
Photo courtesy of Rielamericano, Buenos Aires, Argentina.
© PHIFER INCORPORATED V23 042723 3033835