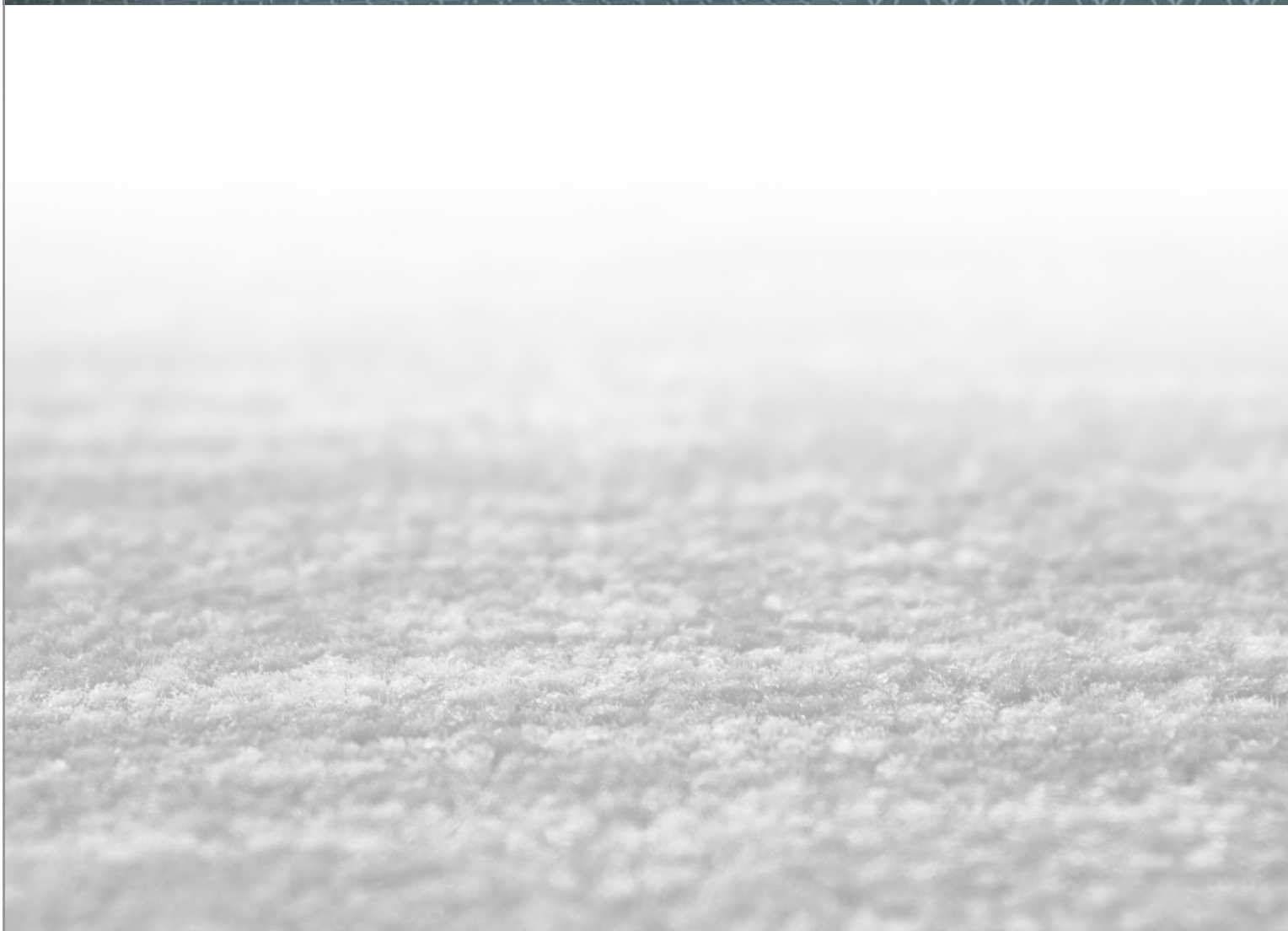




# Q STEP 2





# Q STEP 2 COLLECTION

**de** Um den Quickstep immer wieder neu zu entdecken und weiterzuentwickeln, muss ein guter Tänzer ihn sicher beherrschen. Er gilt als der fröhlichste und lebendigste unter den Turniertänzen und zeichnet sich durch schnelle, kontrollierte und fließende Bewegungen aus. Dieser Tanz ist eine eigenwillige Mischung aus dynamischen Schritten, einem schnellen Tempo und fortlaufenden Wechseln.

**en** In order to continually rediscover and refine the quickstep, a good dancer must have a firm command of it. It is regarded as the most cheerful and animated ballroom dance and is characterised by swift, controlled and fluid movements. The dance is a distinctive mix of dynamic steps, a fast tempo and successive changes.

**fr** Pour redécouvrir et faire évoluer sans cesse le Quickstep, un bon danseur doit bien sûr le maîtriser. Parmi les danses de compétition, cette danse est considérée comme la plus joyeuse et la plus vivante, et se caractérise par des mouvements rapides, contrôlés et fluides. Cette danse mélange de façon originale pas dynamiques, tempo rapide et changement continu.

In der Q step Collection von Halbmond spiegelt sich diese Dynamik wider. Mit 36 zeitlosen Designs in je 6 Farbvarianten, einem schnellen Musterservice und kurzen Lieferzeiten, bietet Ihnen diese Kollektion ein Höchstmaß an Flexibilität.

This dynamism is reflected in Halbmond's Q step Collection. With 36 classic designs in each of the six colour combinations, a fast sample service and speedy delivery times, this collection offers you the maximum degree of flexibility.

Cette dynamique se reflète dans la collection Q step d'Halbmond. Avec 36 modèles intemporels, chacun décliné dans six couleurs différentes, un service d'échantillons rapide et des délais de livraison courts, cette collection vous offre une grande flexibilité.

- 900 g/m<sup>2</sup> Markenpolyamid für höchsten Anspruch
- Produziert mit modernster Chromojet-Technologie
- 36 Designs aller Art
- 6 Farboptionen pro Design
- Unkomplizierte Auswahl
- Einfach zu bestellen
- Schneller Musterservice
- Kurze Lieferzeiten
- Wettbewerbsfähige Preise

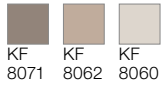
- 900 g/m<sup>2</sup> branded polyamide for the highest demands
- Manufactured by the latest Chromojet technology
- 36 designs of any kind
- 6 colour combinations per design
- Straightforward choice
- Easy to order
- Fast sample service
- Quick delivery times
- Competitive prices

- 900 g/m<sup>2</sup> en polyamide de marque pour répondre aux exigences les plus élevées
- Fabriqué grâce à la technologie de pointe Chromojet
- 36 modèles dans tous les genres
- 6 couleurs au choix par modèle
- Sélection aisée
- Facile à commander
- Service d'échantillons rapide
- Courts délais de livraison
- Prix compétitifs

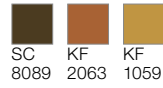




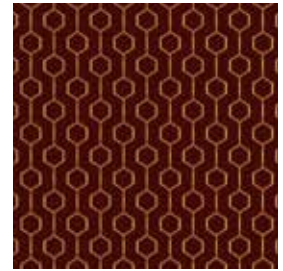
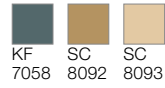
**Q50-1**



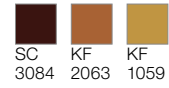
**Q50-2**



**Q50-4**



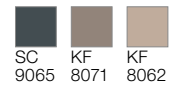
**Q50-5**



**Q50-6**



**Q50-3**

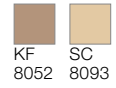


Repeat appr. 16,7 x 16 cm  
Detail appr. 100 x 100 cm

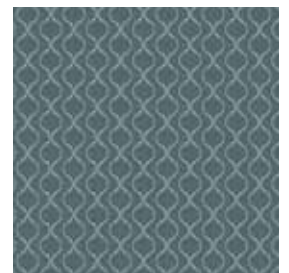
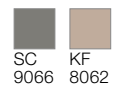




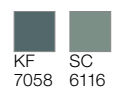
**Q51-1**



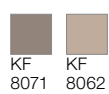
**Q51-3**



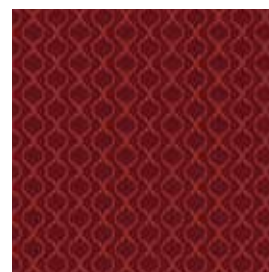
**Q51-4**



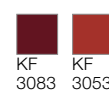
**Q51-2**



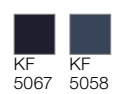
Repeat appr. 16,7 x 11 cm  
Detail appr. 100 x 100 cm



**Q51-5**

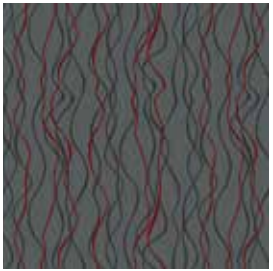
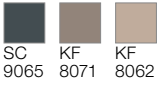


**Q51-6**

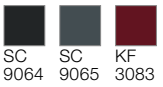




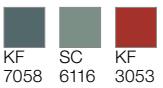
**Q52-1**



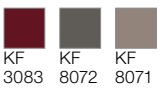
**Q52-3**



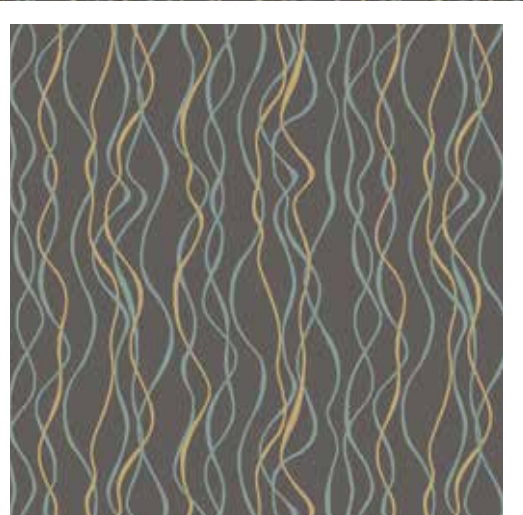
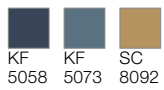
**Q52-4**



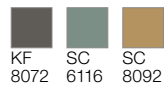
**Q52-5**



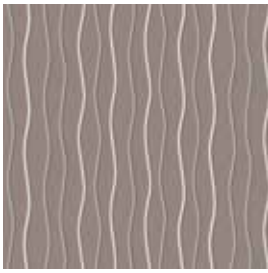
**Q52-6**



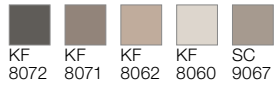
**Q52-2**



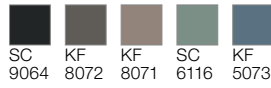
Repeat appr. 66,7 x 65,7 cm  
Detail appr. 100 x 100 cm



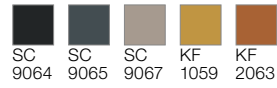
**Q53-1**



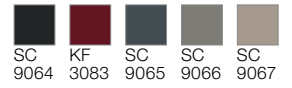
**Q53-2**



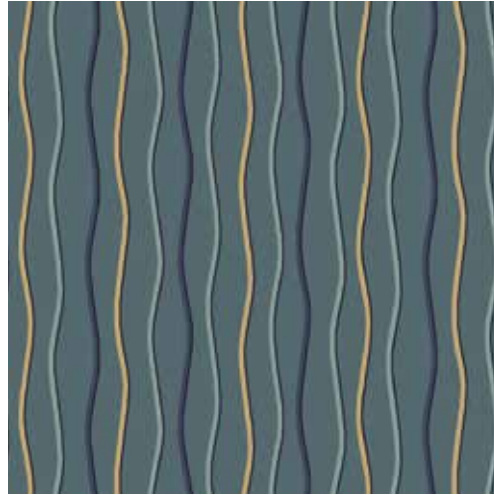
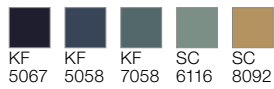
**Q53-3**



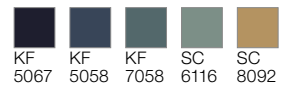
**Q53-5**



**Q53-6**



**Q53-4**

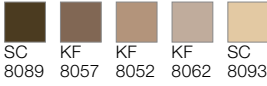


Repeat appr. 66,7 x 32,8 cm  
Detail appr. 100 x 100 cm

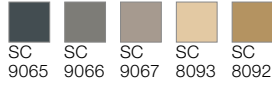




**Q54-2**



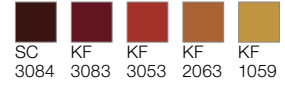
**Q54-3**



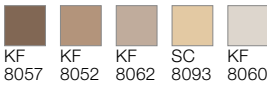
**Q54-4**



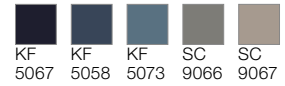
**Q54-5**



**Q54-1**



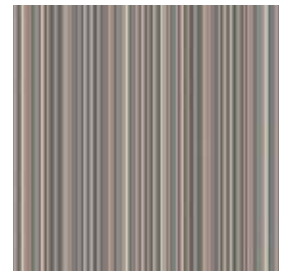
**Q54-6**



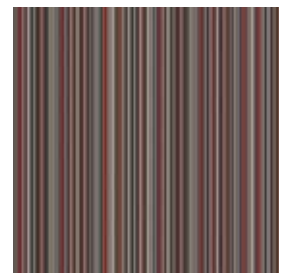
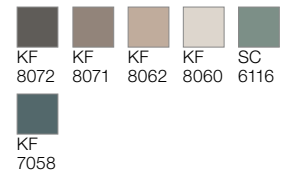
Repeat appr. 66,7 x 65,7 cm  
Detail appr. 100 x 100 cm



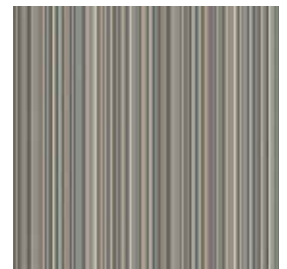
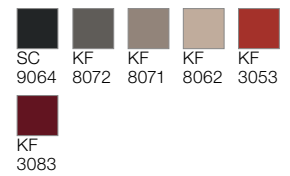




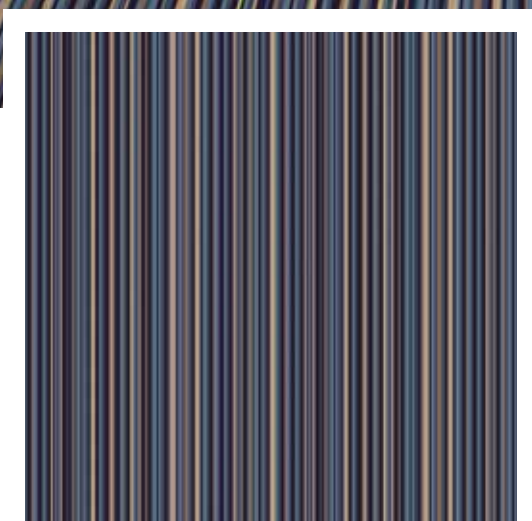
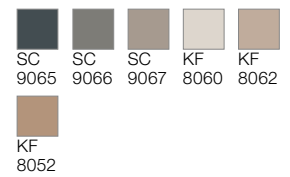
**Q55-1**



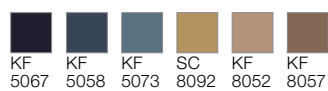
**Q55-2**



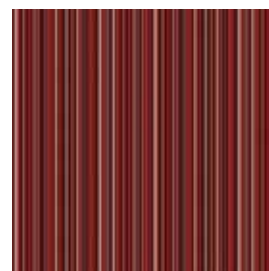
**Q55-3**



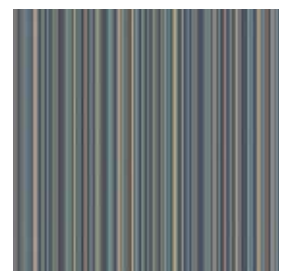
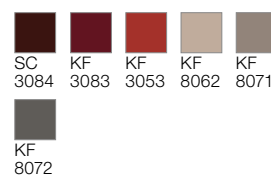
**Q55-6**



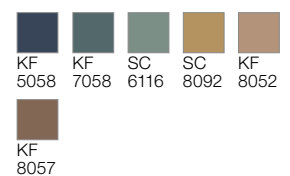
Repeat appr. 50 x 50 cm  
Detail appr. 100 x 100 cm



**Q55-5**

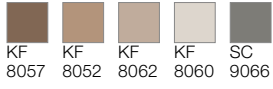


**Q55-4**

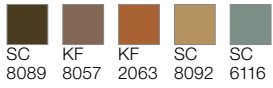




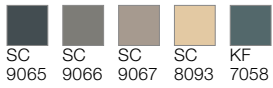
**Q56-1**



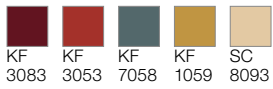
**Q56-2**



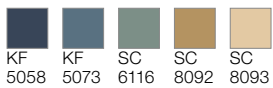
**Q56-3**



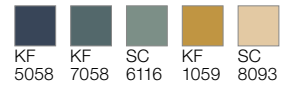
**Q56-5**



**Q56-6**



**Q56-4**

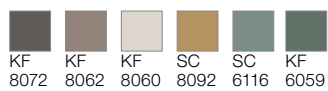


Repeat appr. 66,7 x 65,7 cm  
Detail appr. 100 x 100 cm





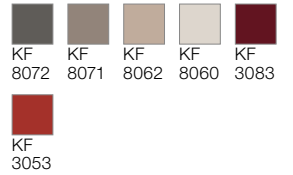
**Q57-1**



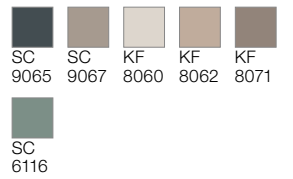
Repeat appr. 66,7 x 72,4 cm  
Detail appr. 100 x 100 cm



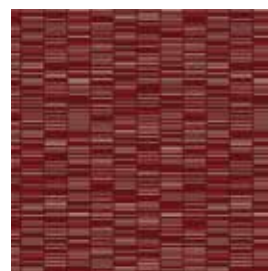
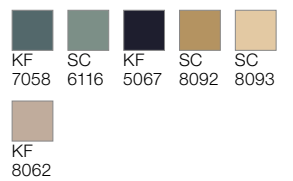
**Q57-2**



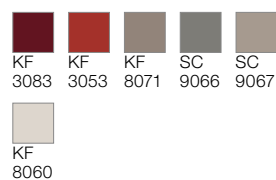
**Q57-3**



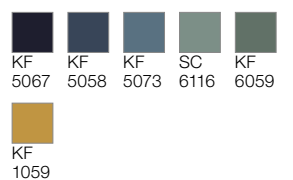
**Q57-4**



**Q57-5**



**Q57-6**





**Q58-6**



KF 5067   KF 7058   SC 6116

Repeat appr. 100 x 98,5 cm

Detail appr. 100 x 100 cm



**Q58-1**



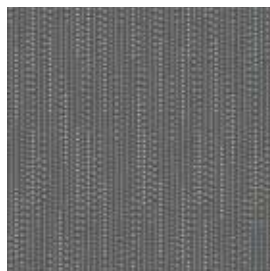
KF 8071   KF 8062   KF 8060



**Q58-2**



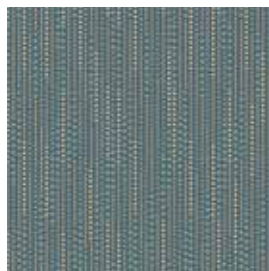
KF 8072   KF 8071   KF 8062



**Q58-3**



SC 9065   KF 8071   KF 8062



**Q58-4**



KF 7058   SC 6116   SC 8093

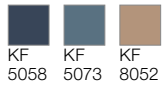


**Q58-5**

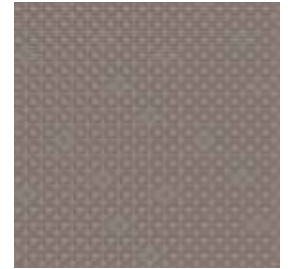
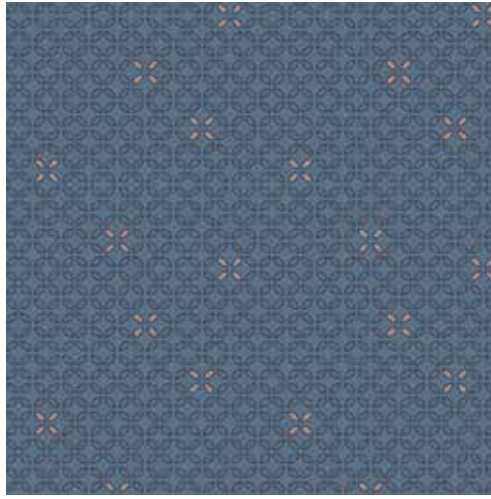


SC 3084   KF 3083   KF 3053

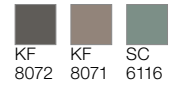
**Q59-6**



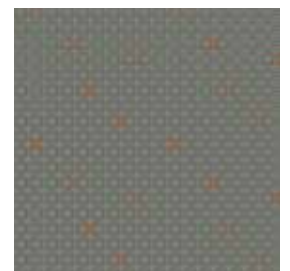
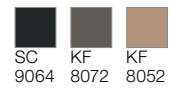
Repeat appr. 50 x 49,2 cm  
Detail appr. 100 x 100 cm



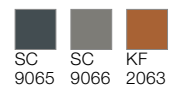
**Q59-1**



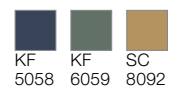
**Q59-2**



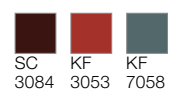
**Q59-3**



**Q59-4**

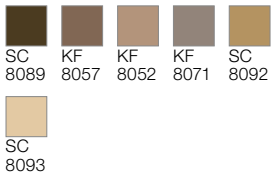


**Q59-5**





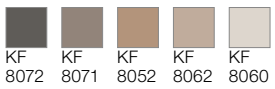
**Q60-2**



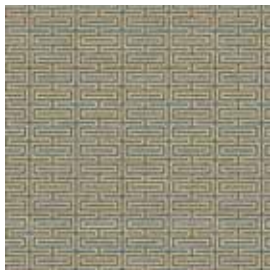
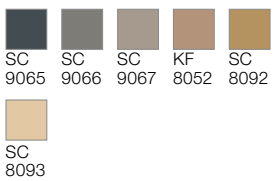
Repeat appr. 66,7 x 64,8 cm  
Detail appr. 100 x 100 cm



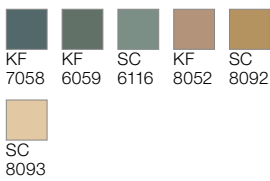
**Q60-1**



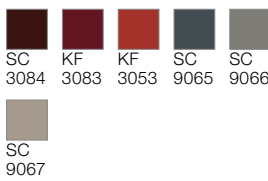
**Q60-3**



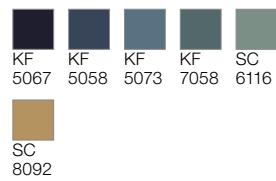
**Q60-4**



**Q60-5**

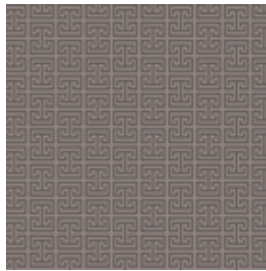
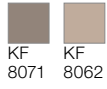


**Q60-6**

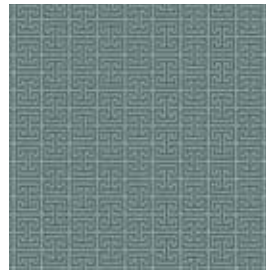
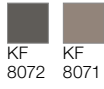




**Q61-1**



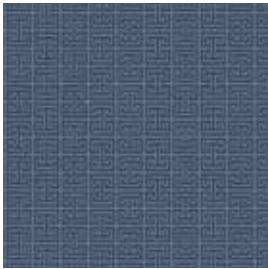
**Q61-2**



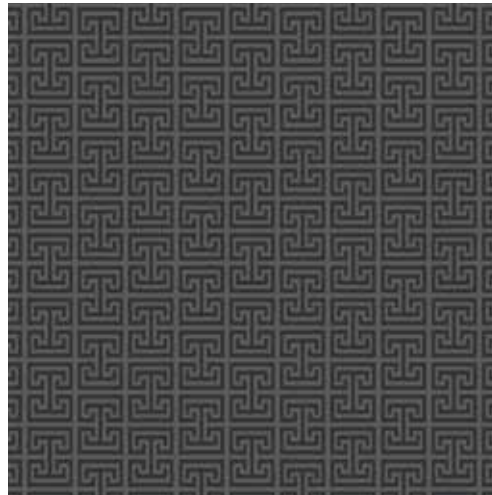
**Q61-4**



**Q61-5**



**Q61-6**

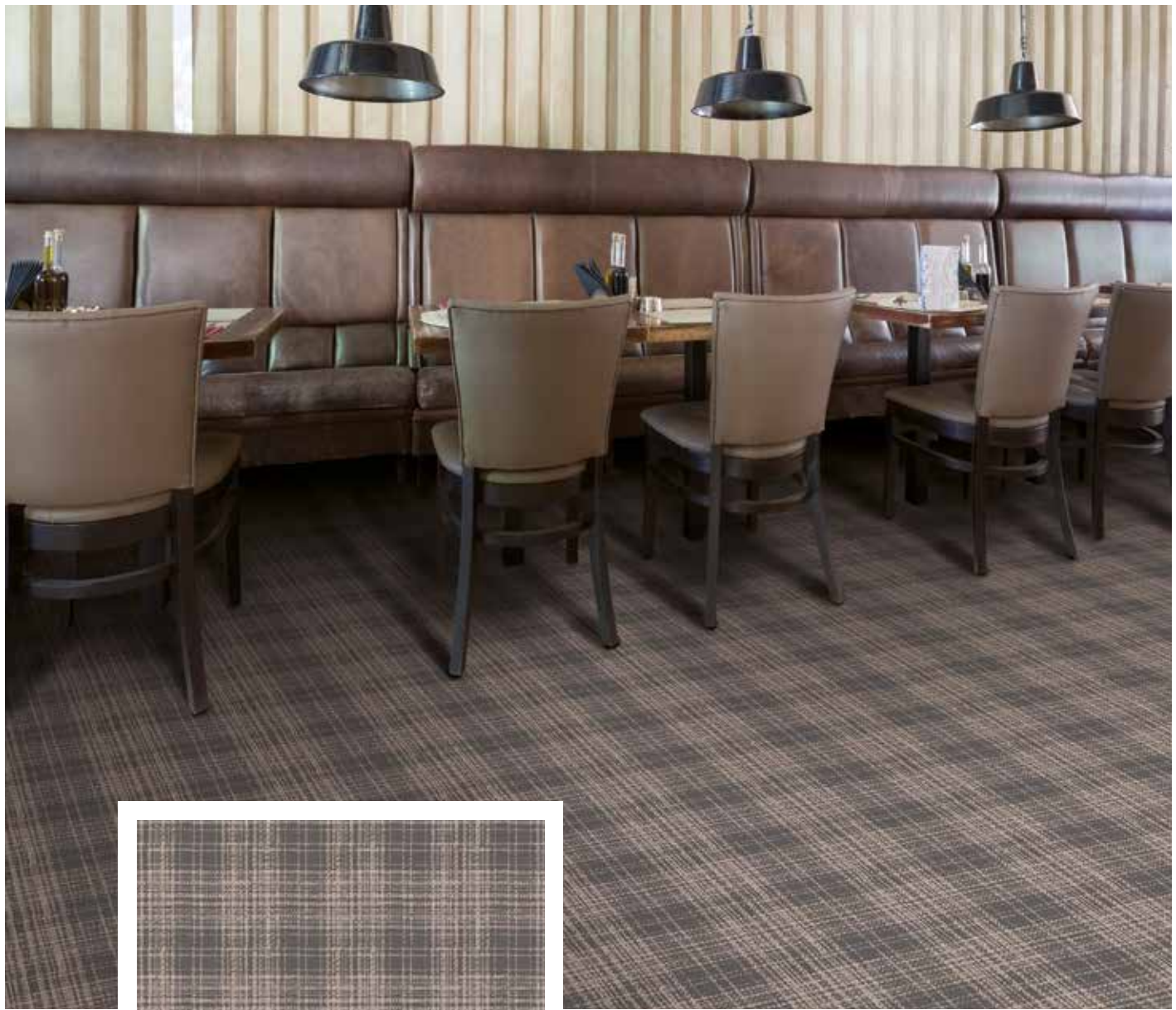


**Q61-3**

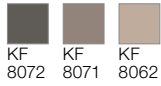


Repeat appr. 20 x 12,6 cm  
Detail appr. 100 x 100 cm

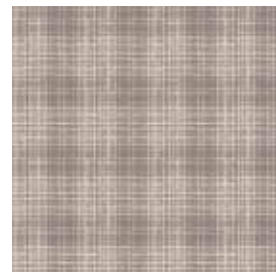




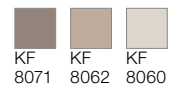
**Q62-2**



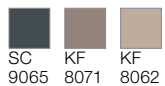
Repeat appr. 50 x 49,2 cm  
Detail appr. 100 x 100 cm



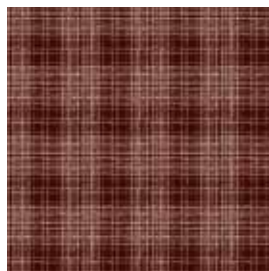
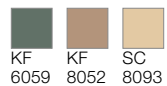
**Q62-1**



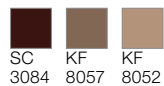
**Q62-3**



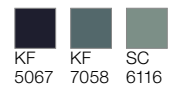
**Q62-4**



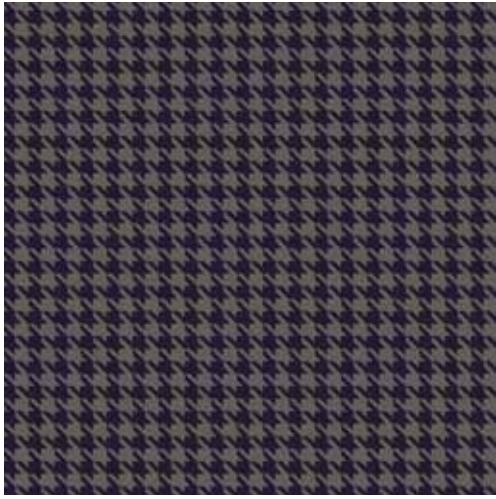
**Q62-5**



**Q62-6**



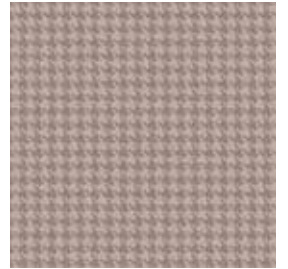




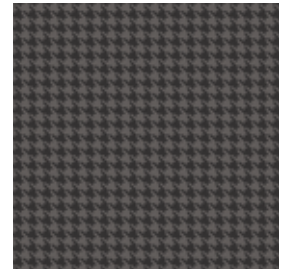
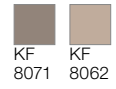
**Q63-6**



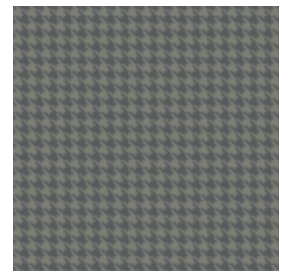
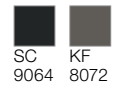
Repeat appr. 5,0 x 4,9 cm  
Detail appr. 100 x 100 cm



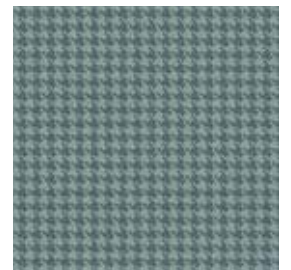
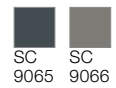
**Q63-1**



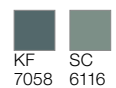
**Q63-2**



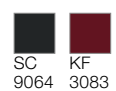
**Q63-3**



**Q63-4**

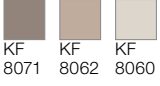


**Q63-5**





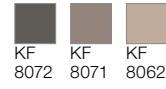
**Q64-1**



KF 8071   KF 8062   KF 8060



**Q64-2**

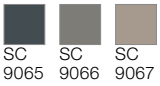


KF 8072   KF 8071   KF 8062

Repeat appr. 133,3 x 131,3 cm  
Detail appr. 100 x 100 cm



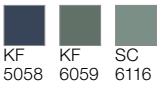
**Q64-3**



SC 9065   SC 9066   SC 9067



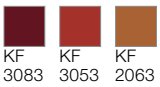
**Q64-4**



KF 5058   KF 6059   SC 6116



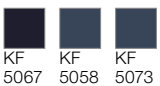
**Q64-5**



KF 3083   KF 3053   KF 2063



**Q64-6**

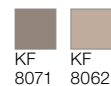


KF 5067   KF 5058   KF 5073

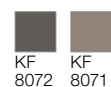




**Q65-1**



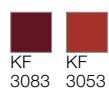
**Q65-2**



**Q65-3**



**Q65-5**



Repeat appr. 30,8 x 47,4 cm  
Detail appr. 100 x 100 cm



**Q65-4**

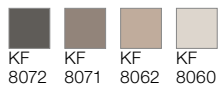


**Q65-6**





**Q66-1**



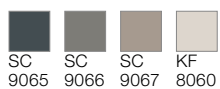
**Q66-2**



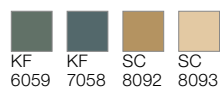
Repeat appr. 50 x 49,2 cm  
Detail appr. 100 x 100 cm



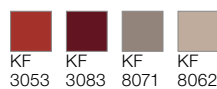
**Q66-3**



**Q66-4**



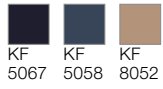
**Q66-5**



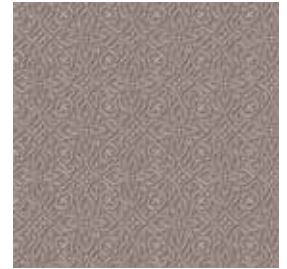
**Q66-6**



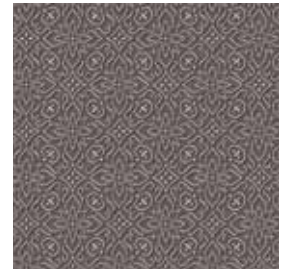
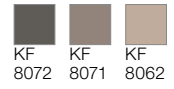
**Q67-6**



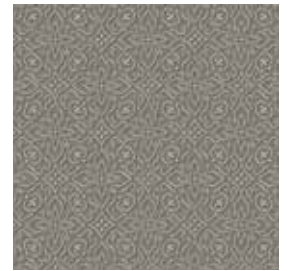
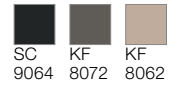
Repeat appr. 33,3 x 32,8 cm  
Detail appr. 100 x 100 cm



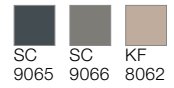
**Q67-1**



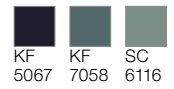
**Q67-2**



**Q67-3**



**Q67-4**

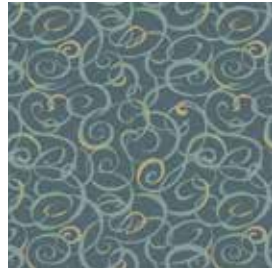
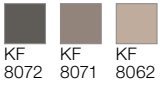


**Q67-5**

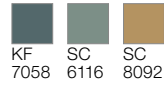




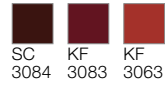
**Q68-2**



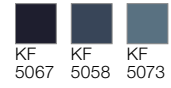
**Q68-4**



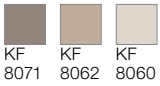
**Q68-5**



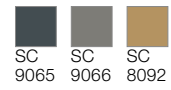
**Q68-6**



**Q68-1**



**Q68-3**

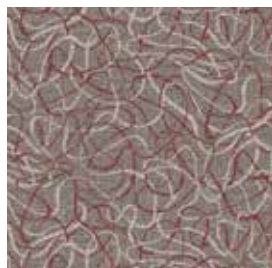
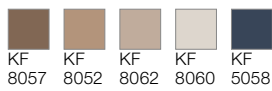


Repeat appr. 66,7 x 65,7 cm  
Detail appr. 100 x 100 cm

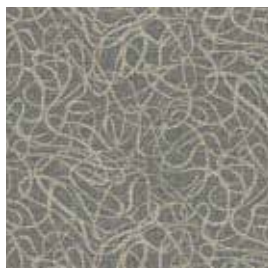
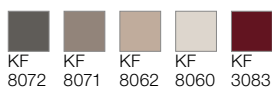




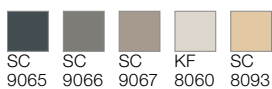
**Q69-1**



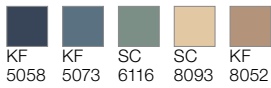
**Q69-2**



**Q69-3**



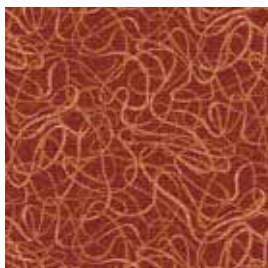
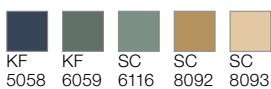
**Q69-6**



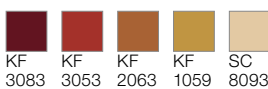
Repeat appr. 133,3 x 73 cm  
Detail appr. 100 x 100 cm



**Q69-4**

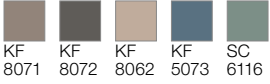


**Q69-5**

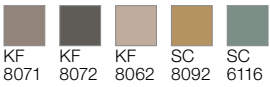




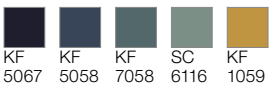
**Q70-1**



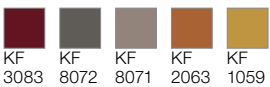
**Q70-2**



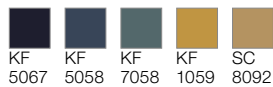
**Q70-4**



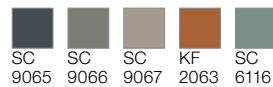
**Q70-5**



**Q70-6**



**Q70-3**

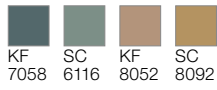


Repeat appr. 100 x 100 cm

Detail appr. 100 x 100 cm



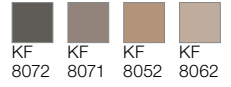
**Q71-4**



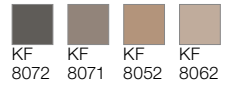
Repeat appr. 80 x 78,7 cm  
Detail appr. 100 x 100 cm



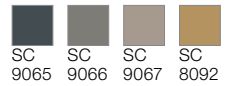
**Q71-1**



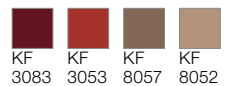
**Q71-2**



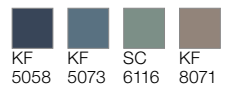
**Q71-3**



**Q71-5**

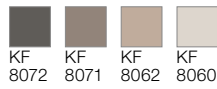


**Q71-6**





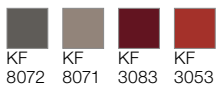
**Q72-1**



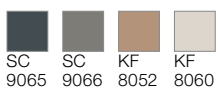
Repeat appr. 80 x 42,8 cm  
Detail appr. 100 x 100 cm



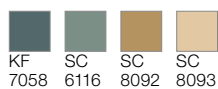
**Q72-2**



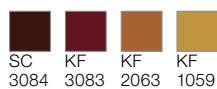
**Q72-3**



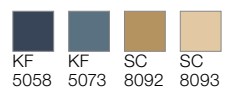
**Q72-4**

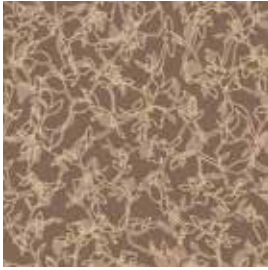


**Q72-5**

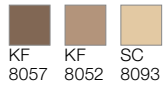


**Q72-6**

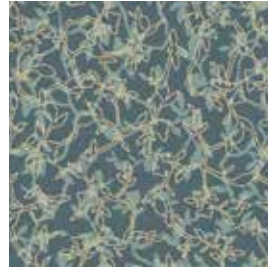
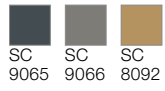




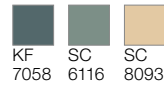
**Q73-1**



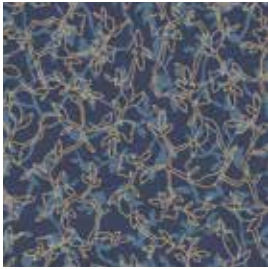
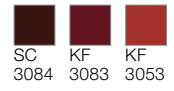
**Q73-3**



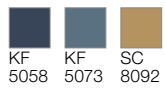
**Q73-4**



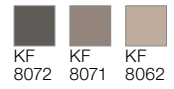
**Q73-5**



**Q73-6**



**Q73-2**

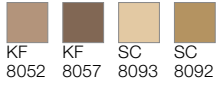


Repeat appr. 100 x 119 cm  
Detail appr. 100 x 100 cm

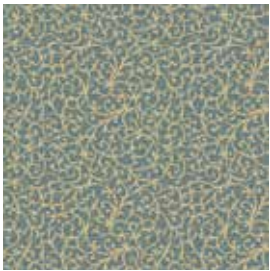




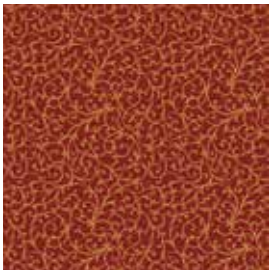
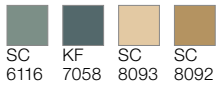
**Q74-1**



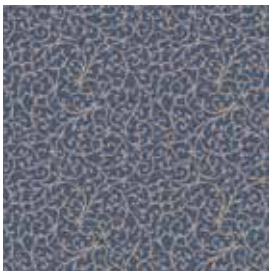
**Q74-3**



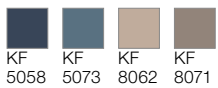
**Q74-4**



**Q74-5**



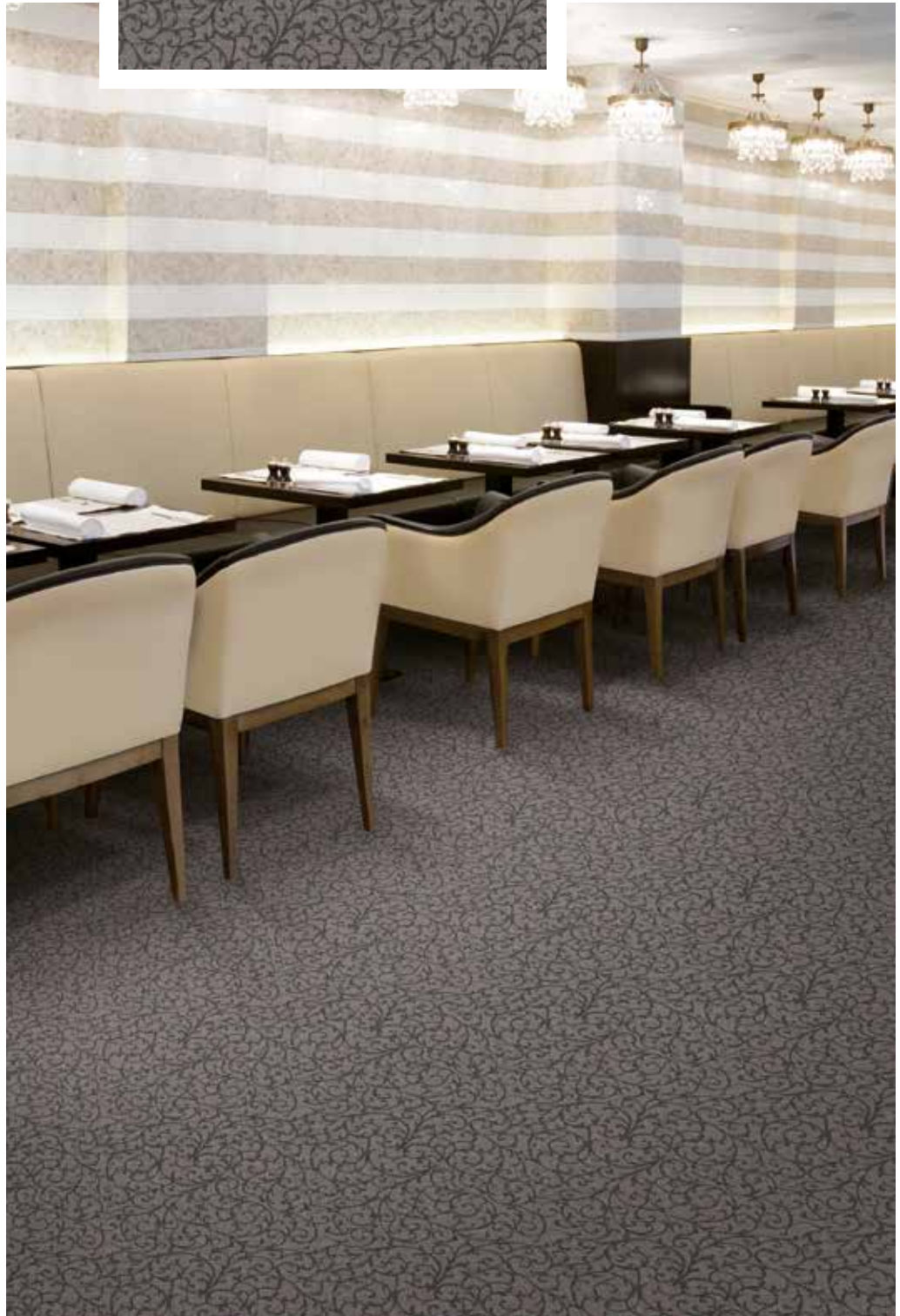
**Q74-6**



**Q74-2**

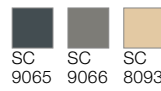


Repeat appr. 50 x 49,2 cm  
Detail appr. 100 x 100 cm



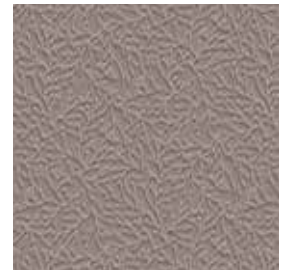


**Q75-3**

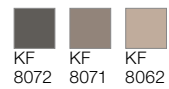


SC SC SC  
9065 9066 8093

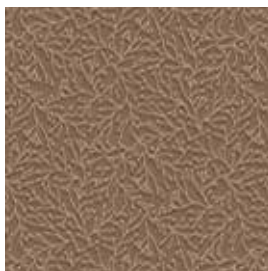
Repeat appr. 80 x 78,7 cm  
Detail appr. 100 x 100 cm



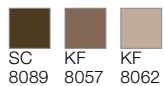
**Q75-1**



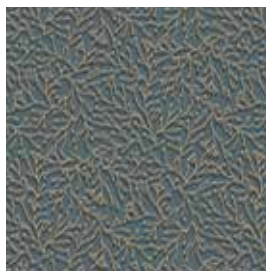
KF KF KF  
8072 8071 8062



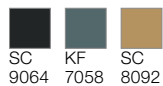
**Q75-2**



SC KF KF  
8089 8057 8062



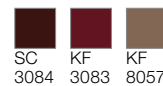
**Q75-4**



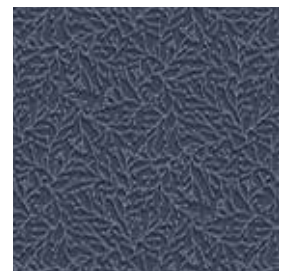
SC KF SC  
9064 7058 8092



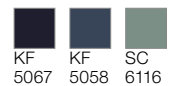
**Q75-5**



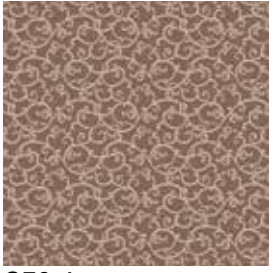
SC KF KF  
3084 3083 8057



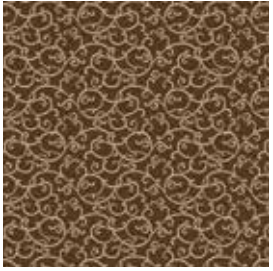
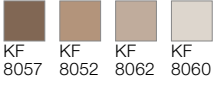
**Q75-6**



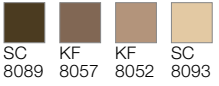
KF KF SC  
5067 5058 6116



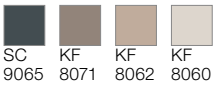
**Q76-1**



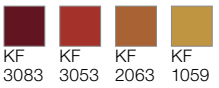
**Q76-2**



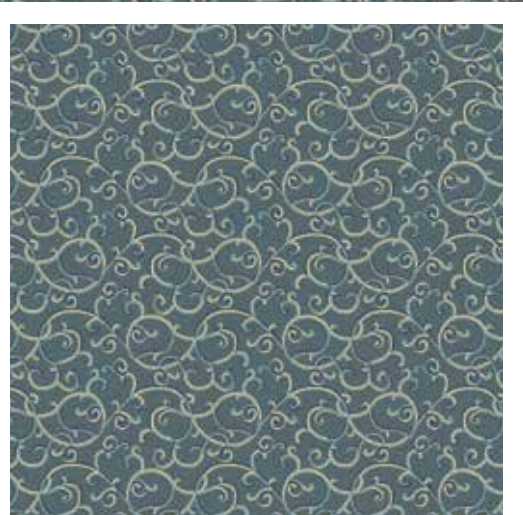
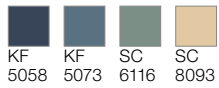
**Q76-3**



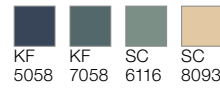
**Q76-5**



**Q76-6**



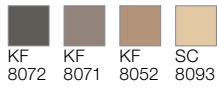
**Q76-4**



Repeat appr. 30,8 x 30 cm

Detail appr. 100 x 100 cm

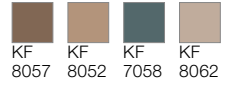
**Q77-2**



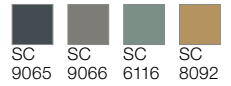
Repeat appr. 66,7 x 65,7 cm  
Detail appr. 100 x 100 cm



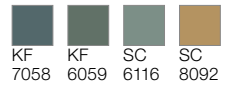
**Q77-1**



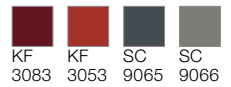
**Q77-3**



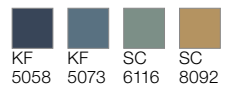
**Q77-4**



**Q77-5**

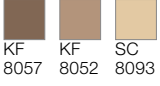


**Q77-6**

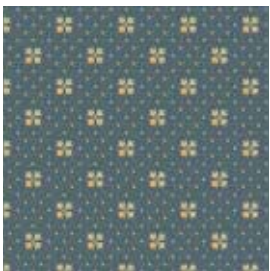
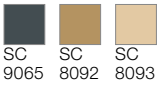




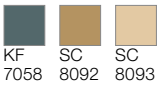
**Q78-2**



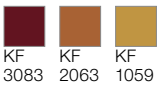
**Q78-3**



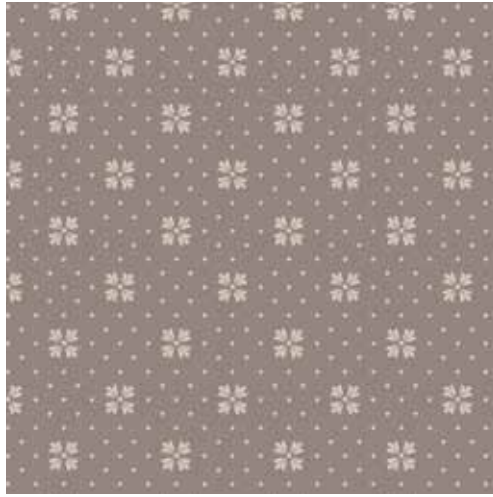
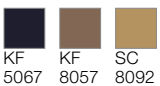
**Q78-4**



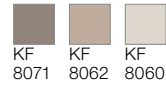
**Q78-5**



**Q78-6**



**Q78-1**



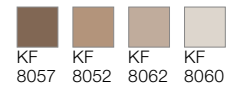
Repeat appr. 22,2 x 22 cm  
Detail appr. 100 x 100 cm



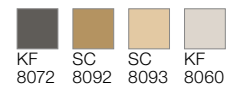




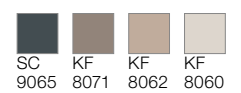
**Q79-1**



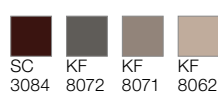
**Q79-2**



**Q79-3**



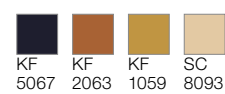
**Q79-5**



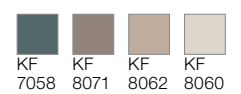
Repeat appr. 25 x 24,6 cm  
Detail appr. 100 x 100 cm



**Q79-6**

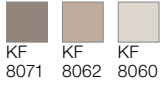


**Q79-4**





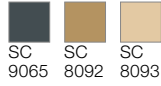
**Q80-1**



KF 8071   KF 8062   KF 8060



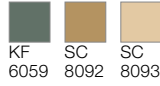
**Q80-3**



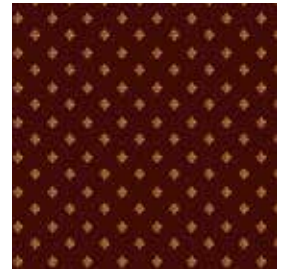
SC 9065   SC 8092   SC 8093



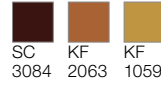
**Q80-4**



KF 6059   SC 8092   SC 8093



**Q80-5**



SC 3084   KF 2063   KF 1059



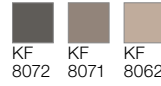
**Q80-6**



KF 5067   KF 7058   SC 6116



**Q80-2**



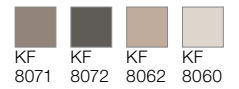
KF 8072   KF 8071   KF 8062

Repeat appr. 25 x 24,6 cm  
Detail appr. 100 x 100 cm

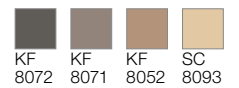




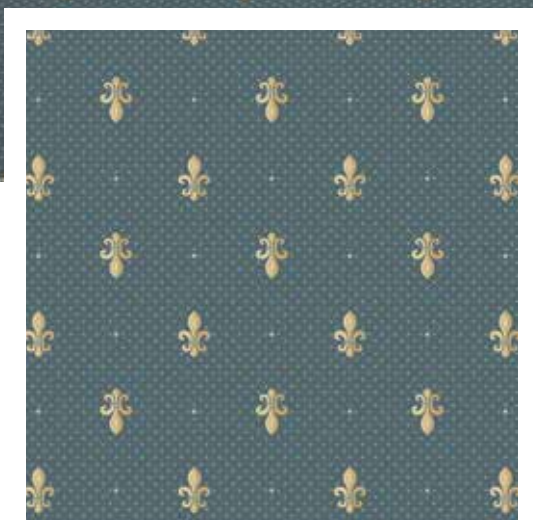
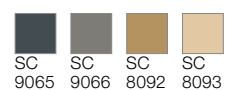
**Q81-1**



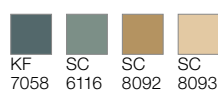
**Q81-2**



**Q81-3**



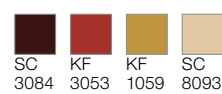
**Q81-4**



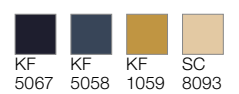
Repeat appr. 30,8 x 30,3 cm  
Detail appr. 100 x 100 cm

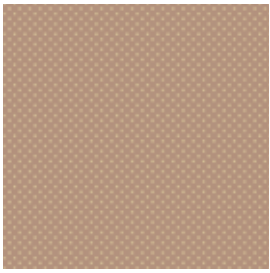


**Q81-5**

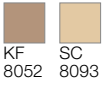


**Q81-6**

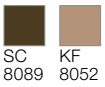




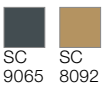
**Q82-1**



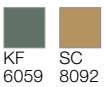
**Q82-2**



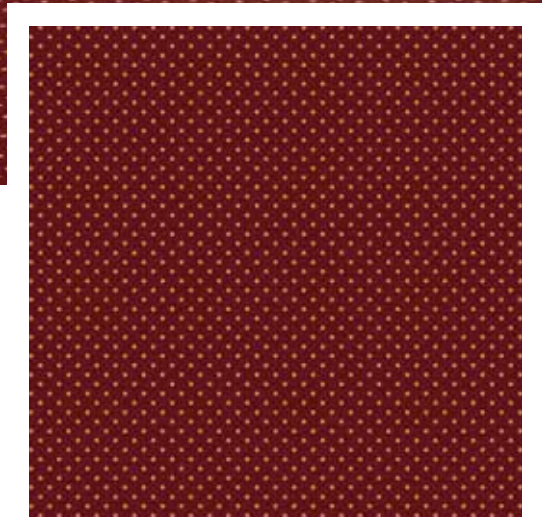
**Q82-3**



**Q82-4**



**Q82-6**



**Q82-5**

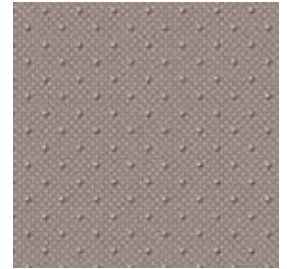


Repeat appr. 2,5 x 2,4 cm  
Detail appr. 66,7 x 66,7 cm

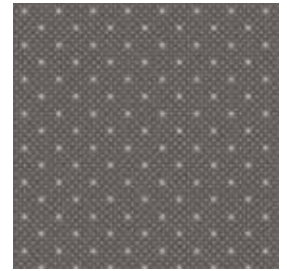
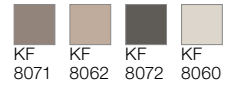
**Q83-3**



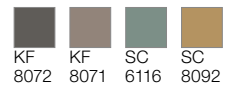
Repeat appr. 8,3 x 8,2 cm  
Detail appr. 66,7 x 66,7 cm



**Q83-1**



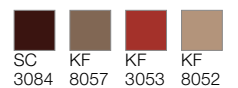
**Q83-2**



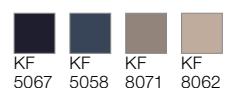
**Q83-4**

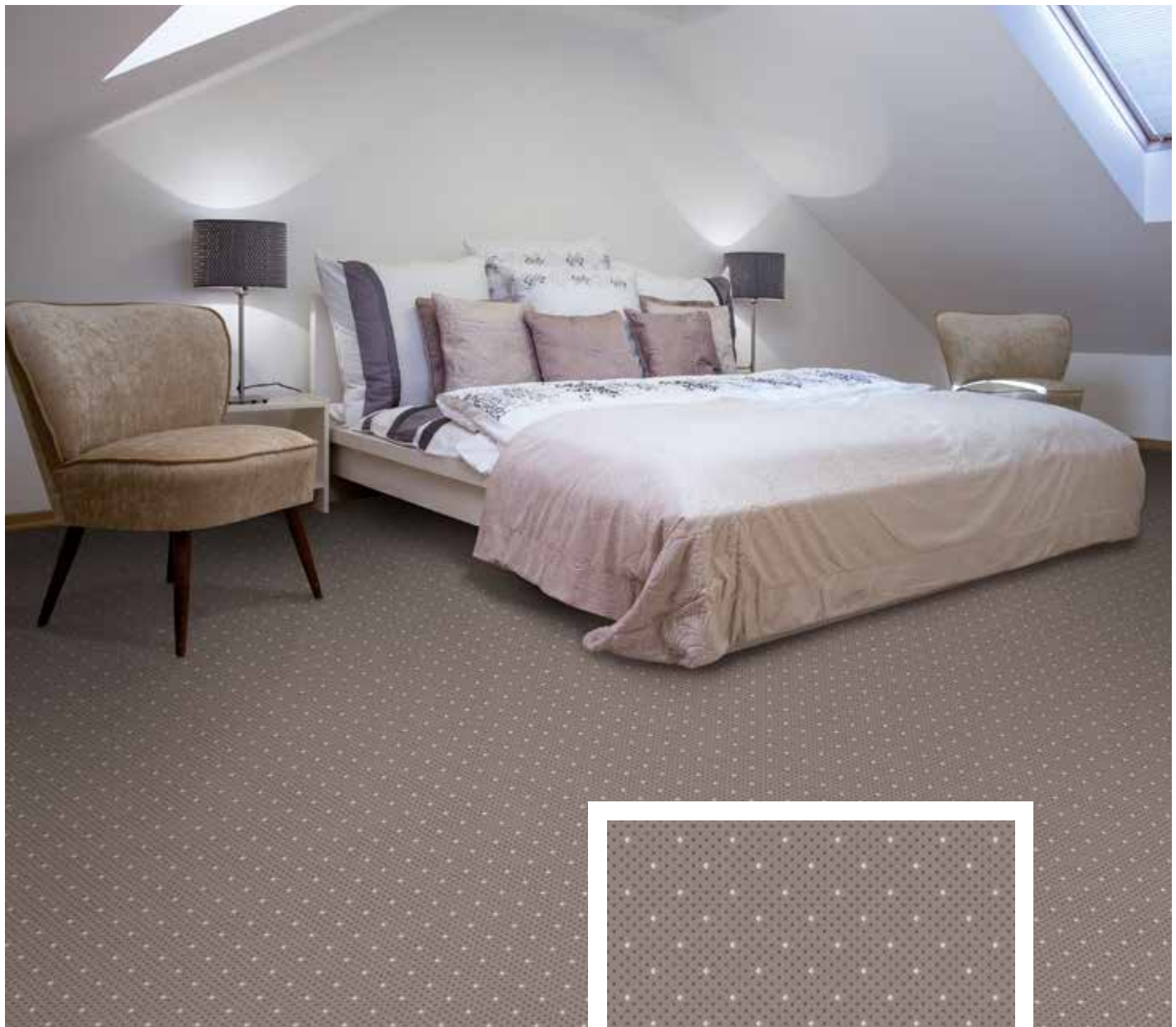


**Q83-5**

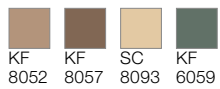


**Q83-6**

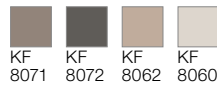




**Q84-1**



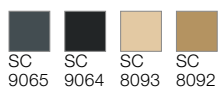
**Q84-2**



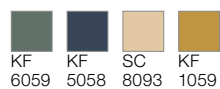
Repeat appr. 8,3 x 8,2 cm  
Detail appr. 66,7 x 66,7 cm



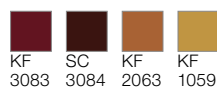
**Q84-3**



**Q84-4**



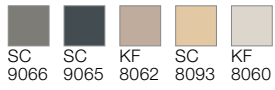
**Q84-5**



**Q84-6**



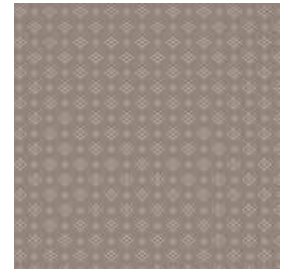
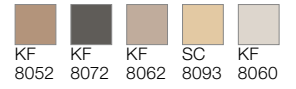
**Q85-3**



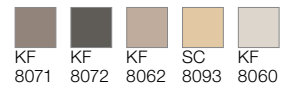
Repeat appr. 7,4 x 7,3 cm  
Detail appr. 66,7 x 66,7 cm



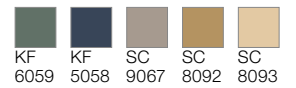
**Q85-1**



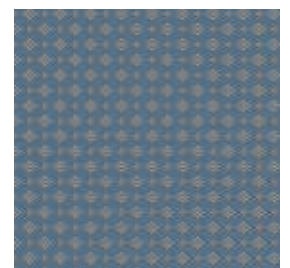
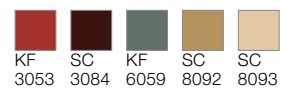
**Q85-2**



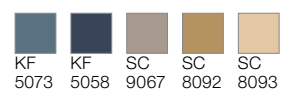
**Q85-4**

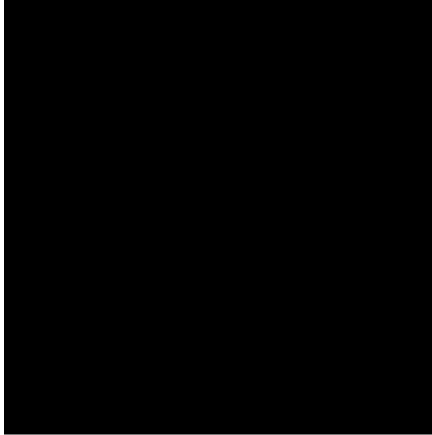
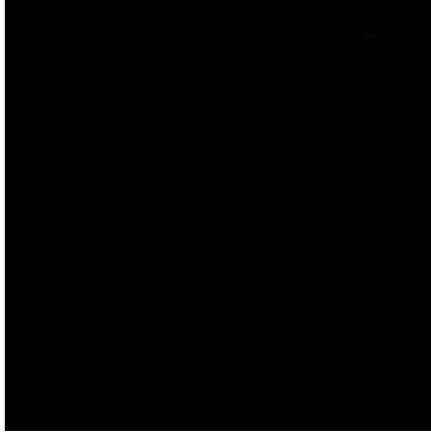
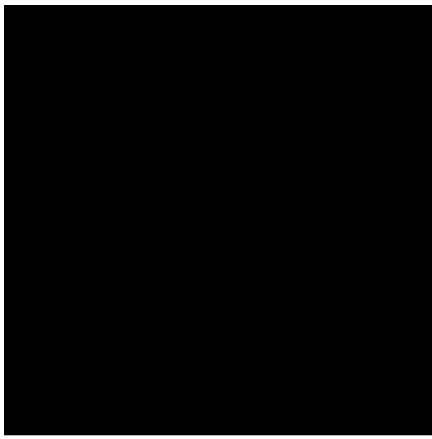


**Q85-5**



**Q85-6**









# Farben | Colours | Couleurs



SC 9064



SC 9065



SC 9066



SC 9067



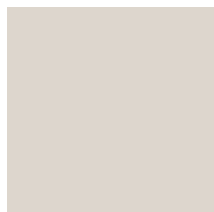
KF 8072



KF 8071



KF 8062



KF 8060



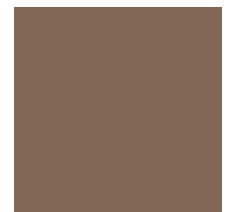
SC 8093



SC 8092



KF 8052



KF 8057



SC 8089



SC 3084



KF 3083



KF 3053



KF 2063



KF 1059



KF 5067



KF 5058



KF 5073



SC 6116



KF 6059



KF 7058

Bitte beachten Sie, dass die in dieser Kollektion dargestellten Farben nur annähernd den tatsächlichen Teppichbodenfarben entsprechen. Verwenden Sie bitte unsere original Farbmuster.

Please note that colours in this printed brochure are approximate. For correct colours please refer to our colour samples.

Veillez noter que les couleurs représentées dans cette collection sont approximatives par rapport aux couleurs réelles. S'il vous plaît utiliser notre nuancier original.

# AP 900

Warenkonstruktion Construction   Structure		Tufting Velour Saxony 1/10“ tufted cut pile Saxony 1/10“   Tufting Velours Saxony 1/10“
Mustergestaltung Design   Dessin		Chromojet Druck Chromojet printed   Impression jet d'encre
Polmaterial nach TKG Pile layer   Nature de la fibre selon la TKG		100% Polyamid 6 100% Polyamide 6   100% Polyamide 6
Tufting-Träger Primary backing   Sous-couche tuftage		75% PES / 25% PA-Vlies 75% PES / 25% PA-non woven   75 % polyester / 25 % non-tissé PA
Rückenausrüstung Secondary backing   Dossier d'envers		textiler Zweitrücken woven PP   PP tissé
Lieferform Available size   Format de livraison	Bahnenware rolls   rouleaux	400 cm
Verwendungsbereich Wear rating   Domaine d'application	EN 1307	gewerblich - stark (33) commercial - heavy (33)   commercial - élevé (33)
Komfortwert Comfort rating   Valeur de confort	EN 1307	LC 2
Flächengewicht Total weight   Grammage total	ISO 8543	ca. 1930 g/m <sup>2</sup> app. 1930 g/m <sup>2</sup>
Gesamtdicke Total thickness   Épaisseur totale	ISO 1765	ca. 7 mm app. 7 mm
Poleinsatzgewicht Pile total yarn weight   Poids du velours		ca. 980 g/m <sup>2</sup> app. 980 g/m <sup>2</sup>
Polschichtdicke Pile height above primary backing Épaisseur du velours	ISO 1766	ca. 4,2 mm app. 4,2 mm
Pol-Rohdichte Pile density   Densité brute du velours	ISO 8543	ca. 0,14 g/cm <sup>3</sup> app. 0,14 g/cm <sup>3</sup>
Noppenzahl Number of tufts   Nombre de tufts	ISO 1763	ca. 173800 /m <sup>2</sup> app. 173800 /m <sup>2</sup>
Elektostatisches Verhalten Vertical resistance Comportement électrostatique	ISO 6356	≤ 2 kV
Bewertete Trittschallminderung Impact sound reduction Indice de réduction des bruits d'impact	ISO 140-8	ca. 27 dB app. 27 dB
Schallabsorptionsgrad $\alpha_w$ Sound absorption rate Coéfficient d'absobtion acoustique	ISO 354	ca. 0,2 app. 0,2
Wärmedurchlaßwiderstand Thermal resistance   Résistivité thermique	ISO 8302	ca. 0,13 m <sup>2</sup> K/W app. 0,13 m <sup>2</sup> K/W
Prodis-Lizenz-Nummer Prodis-licence-number   N° de licence Prodis		FDBD24FD
Umwelt-Produktdeklaration Environmental Product Declaration Déclaration Environnementale Produit	ISO 14025	EPD-GUT-20170017-CCA1-DE-D
Allgemeine bauaufsichtliche Zulassung (abZ) abZ-number   Agrément technique général		Z-156.601-617
Brandverhalten Reaction to fire   Comportement au feu	EN 13501	Cfl-s1
CE-Nummer CE-number   numero CE		1658-CPR-3139
DoP-Nummer DoP-number   numero DoP		0001
Lichtechtheit Colour fastness to light   Stabilité à la lumière	DIN EN ISO 105 B02	≥ 5
Wasserechtheit Colour fastness to water   Résistance à l'eau	DIN EN ISO 105 E01	≥ 4
Reibechtheit Colour fastness to rubbing Résistance à l'usure par friction	DIN EN ISO 105 X12	≥ 3-4



Zusatzeignungen  
Additional properties  
Aptitude additionnelle

Stand September 2017. Kontaktieren Sie Ihren Ansprechpartner für das aktuelle Datenblatt.  
Status September 2017. Please contact your representative for the current technical specifications.  
État Septembre 2017. Contactez votre responsable pour la courante fiche technique.

# CARPET PRODUCT GUIDE



Halbmond Teppichwerke GmbH  
Brückenstraße 1  
D-08606 Oelsnitz, Germany  
Tel.: +49 37421-42-0  
Fax: +49 37421-42-571  
info@halbmond.de  
www.halbmond.de



HTW DESIGN CARPET  
Mindener Str. 6  
D-32049 Herford  
Tel.: +49 5221-1779-0  
Fax: +49 5221-1779-79  
info@htw-designcarpet.de  
www.htw-designcarpet.de

